



Alden Lane Nursery Newsletter

JULY 2008

Serving You Since 1955

981 Alden Lane, Livermore, CA • www.aldenlane.com • (925) 447-0280

Announcements

- **Watch the Valley Gardener** for great gardening tips with host Jacquie Williams-Courtright at 7:30 am every day, repeated on Saturday & Sunday at 11 am.
- **Visit Valley Perks Coffee Bar at Alden Lane!** Have you ever wanted a cup of coffee or tea while you browse Alden Lane? Now you can sip a beverage while you shop. Valley Perks is located in our "Seasons" store next to the greenhouse. We hope you'll enjoy a cup next time you're in!
- Plan to attend the **Alameda County Fair. June 20 to July 6. Don't Miss the Fair Plant Sale.** On Sunday, July 6th many of the plants in the landscape gardens are sold at very reduced prices. The Gates open at 6 p.m. for this fun, fast paced sale. Yes, you pay for parking and admission but it's worth it. Make sure to bring your wagon, cart, dollie or even baby strollers to help cart your purchase to the parking lot.
- **Composting Information.** Call the Rotline, 510-444-SOIL for information on starting your own composting pile or visit the website at www.stopwaste.org. We have the all new Tumbleweed composter. No Heavy lifting just spin the tumbleweed for perfect home made compost.
- **Summer Bonsai Classes at Alden Lane.** July 19th class will be **"A Landscape Planting"**, from 10-1 pm; \$45.00 fee. Please call ahead to reserve your space, and pay for this class. Charles will provide either a landscape plate or a flat pumice rocks for a tray. All plants will be provided including the groundcover needed.

Alden Lane Nursery

Hours: Daily 8:30 am - 6:00 pm
CLOSED ON JULY 4TH!!

Dear Alden Lane Newsletter Subscriber,

In an effort to provide more a 'green', timely, efficient gardening information and reduce costs so Alden Lane Nursery can stay price competitive I am asking you to switch to my web based Enewsletter if at all possible.

To continue to receive the printed paper newsletter you must - THIS MONTH - bring in your newsletter mailing label page at least once. This will let me know you wish to continue to receive my printed newsletter via USPS mail.

If you're far away and still wish to receive the mailed version mail me your label page.

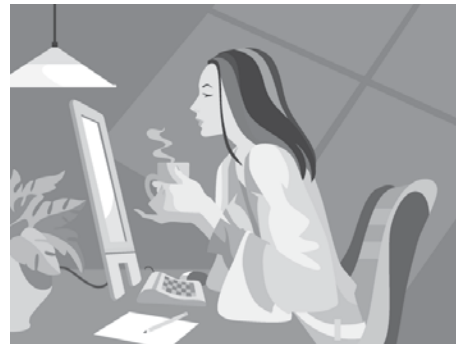
There may be some of you that have moved out of the area and no longer wish to receive my newsletter.

There may be those of you that want to stay in touch where ever you call home.

There are those of you that want the mailed version no matter what.

To receive my weekly Enewsletter that is linked to the paper version, please visit my Nursery website at www.aldenlane.com and signup. New subscribers receive a \$10.00 gift certificate as 'signing bonus'.

If I don't hear from you by AUGUST 1st your mailed newsletter will be discontinued. Please let me know how you want to stay in touch.



*Thank you,
Jacquie*

Come Join Us For "Art Under the Oaks"!



**July 12th & 13th
11 a.m. to 4 p.m.
Each Day**

**All Fruit Trees 20% OFF - ONLY on
July 12th & 13th (Saturday & Sunday)!**
This sale is limited to stock on hand and
does not include citrus trees.



Watering 101

– Part 1 –

The #1 Question:

“HOW OFTEN SHOULD I WATER?”

The REAL answer: **“WHEN YOUR PLANT NEEDS IT!”**

THE GOAL

For your plants to be as self sufficient as possible.

THE BASIC GUIDELINES

- Amend your soil with compost & mulch.
- Build watering basins around new plants.
- Hand water for at least the first week or two.
- Water deeply & thoroughly when you water.
- Allow as much time between waterings as possible.
- Pay close attention to your plants for the first 3 months.
- Adjust your watering as conditions change & as plants mature.
- Enjoy your garden regularly, look at your plants & listen to their needs.

THE PROCESS

Understanding the process of planting and establishing a new plant is the key to a new way to think about water. The focus here will be on in-ground planting but the same general concepts apply to container gardening but the stresses are magnified due to a limited soil volume and greater exposure to the elements.

SOILS

We can't really talk about watering without a bit on soils first. Where you plant and the condition of the soil ultimately determines what happens to the water you apply. We have mostly clay soils around here so digging a hole can be a challenge & the temptation to replace the native soil with a nice potting mix can be great. The truth is, clay soils are good soils, they just need to be broken up with organic matter to create space for air because roots need air just as much as water and nutrients.

Dig a hole twice as wide & an inch or two deeper than the rootball, mix the soil from the hole 50/50 with compost discarding any clods that won't break up. You should take every opportunity to amend your soil, organic matter decomposes & needs replenishing. This is your last chance to affect the texture of the soil around your new plant so don't skimp. As for replacing the soil... don't! A transitional blend between the soil in the pot & the native soil is crucial for proper drainage.

If you encounter *hardpan*... that impenetrable layer of compacted clay just below the surface... what should you do? Ideally, you'd plant in another location. If that's not possible, stop digging and consider planting on top of it and mounding the soil above grade. You want to avoid digging into hardpan unless you can get all the way through or it will act like a pot without a drain.

WATERING 101
Soil Prep • Planting • Watering Basics
Why didn't anyone ever tell me that?

Use Buckets
Not Teacups

Water Deeply
when you water

Roots Go
Where the water is

“ROUGH WEATHER
MAKES STRONG TIMBER”

Too much &
Too little Water
can look the same

Hand Water
First 3 Weeks

Deeply & Infrequently

Over-watering = Too Frequently

Roots need Air
as much as Water

Proximity ≠ Like Conditions

ONLY New Plantings & Pots
OK with Daily Water

First months determine Future

Mulching
conserves water

Water needs change

Water to Establish

How often?
When they need it!

Maximize Self-Sufficiency
with Deep Roots

Drought Tolerant Plants
AREN'T until established

Long, Deep & Slow

Daily Water
= Dependent Plants

GROUP like PLANTS

No such thing as
Too Much Water
at any One Time

Shallow Watering
= Shallow Roots

Best Water Meter
= Your Finger

PLANTING

Now that the hole is ready, it's time to prepare the plant. Remove the pot by tipping it over so the plant slides out. Avoid pulling it out by the stem. Loosen the roots so they are free to grow into the new soil. Position the plant so the top of the root ball is even with or slightly higher (~1/2") than the edge of the hole and fill in with your newly amended soil. Firm it around the root ball as you go with a gentle open hand (not a grinding heel). The idea is to maintain all the airspace we've created by adding organic matter while providing enough support to hold the plant upright.

Planting too deep is a common mistake with deadly consequences. The crown (the main stem at ground level) and the surface roots need air, bury them too deep and they'll choke. It's always best to err on the side of too high, if roots become exposed they can always be covered with a layer of mulch. This can also be a problem with established plants if the soil level around them is raised for any reason. You should always be able to see the flare of the trunk (where the roots begin) at or above ground level. If you don't, pull soil away until you can.

Build a watering basin around your new plant by mounding leftover amended soil in a ring just outside the diameter of the plant. This way you can apply plenty of water to soak the original root ball (where the roots are now) and the surrounding soil (where you want the roots to go). For the first few weeks, especially in the summer, you may need to water every day but as the roots grow out into the surrounding moistened soil you will be able to water less & less frequently.

Notes for July Gardening

♪ **Mulching** makes the summer easier on your garden. It retains moisture and helps minimize weeds. Use a four inch layer of micro, black or shredded bark for the best results.

♪ Spruce up the garden with pots of red-white-blue petunias for the holiday. We have lots of instant color flowers to make holiday parties and barbeques all the more enjoyable. **Shop early because the nursery will be closed on July 4th.**

♪ If you're looking for something to do on a warm summer night – **visit the fair.** The Alameda County fair houses some beautiful landscape exhibits. It runs until July 6th. If you're looking for bargains on plants attend the closing day garden exhibit sale from 6 p.m. to 9 p.m.

♪ **Annual Art Under the Oaks Fruit Tasting** – Join us on July 12th & 13th from 11 a.m. to 4 p.m. at a fruit tasting. Taste new varieties available this year and varieties you never find in stores as well as old time favorites.

♪ **Pay a little extra attention to your roses** this month, water deeply and mulch around the root zone.

♪ **Plant Crape Myrtles now.** These sun and heat loving summer bloomers come in shrub and tree form. Choose from white, red, lavender and many shades of pink.

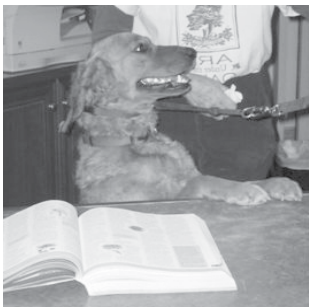
♪ Tasty crunchy vegetables, juicy tomatoes, crisp peppers and tender beans all benefit from regular fertilizing during their growing season. We recommend **Master Nursery's Vegetable Food.** It's lightweight and easy to use.

♪ **Look out for cucumber beetles!** They are active and hungry during the late summer. These green ladybug look alikes eat all but the veins of leaves and flowers, leaving lace like skeletons and devouring whole plants in no time. Use Master Nursery's Sevin for the best results.

♪ The most prevalent lawn fungus, **Brown Spot,** is named for its end results. Look first for a deep blue green hue to your turf. This is the first sign that the fungus is beginning to cut off vital water and nutrient supplies from the roots. **Treatment should begin immediately.** By the time the patches are spreading and turning brown, curative measures are in order.

To prevent and cure your lawns of brown patches, we recommend first that as a matter of practice, you water your lawn in the morning to allow the grass blades to dry before night. Deep thorough watering is very important. A thirsty lawn is more susceptible. Use **Bayer Lawn Fungicide.** It's easy to apply and an excellent control.

Brown patches can also be caused by lawn moth larvae. To prevent or control this problem apply **Bayer "Grub Control"** now.



Hailey's Comments

God Bless America! Indeed we are a very blessed country. Where else would free speech be unleashed to canines than in the grand United States of America? It's your all American retail dog, Hailey, here at Alden Lane with a patriotic and personal perspective on the 22nd Annual Art Under the Oaks Show. Local Livermore celebrity artists will bring their wares to show and sell. The 350 years old Oak, which fell at the front entrance during the 2008 January storm, will be memorialized by our pure bred artists. The treasures that were crafted from the fallen tree will be on display in Ruthie's Room, on the property of Alden Lane, during the art show. Free walk, free music, and free ambiance, July 12 & 13 is the dog's life. Come enjoy a cold bowl of water or other human folk food.

Dog days are here to stay! Are your pooches home all summer and rolling on the grass? You've howled about drug abuse to your litters but is your lawn a junkie waiting for its next fix of water? Lawns can become addicted to intoxicating amounts of water. Watering two to three times a week for a longer period of time helps your lawn develop strong roots instead of the unhealthy daily habit of watering that some gardeners are dependent on.

Go natural with organic fertilizers instead of synthetics. Use a mulching lawn mower to get the most green out of your fertilizer and keep the underground activity of worms and microorganisms unharmed. You have the dominant influence over your 2 and 4 legged native property occupants to ensure a drug free environment. Think Green, be on the team to stay clean and serene.

Paws for Reflection: ***A Poodle is just like a dog but only cuter.***

Justin Watson, Livermore, CA (6 years old)

Recipe for Good Garden Soil! Good Garden Soil Starts Here!!

GOOD GARDEN SOIL!

For each 100 square feet add:

- 5 to 8– 2 cubic ft. bags **Master Gold Rush** or **Bumper Crop**®
- 5 lbs. **Iron Sulfate** to acidify and add iron.
- 10 lbs. **Master Vegetable Food** or **Master Flower Food, Master Formula 49** can be used for ground covers.
- 50 lbs. **Gypsum.** It loosens hard soils as it adds sulfur & calcium. (An excellent addition in our heavy soil.)

Mix well with your soil to an 8" depth and water well.

Mark your calendars for *Art Under the Oaks*

July 12th & 13th from 11:00 am to 4:00 pm



This is the 22nd Anniversary of Art Under the Oaks at Alden Lane Nursery. The historic event combines an art exhibit, food, and beverage, live music and fruit tasting! We'll have local wineries pouring samples, local artists will be on hand demonstrating their craft, music will fill the grounds, and Dave Wilson Nursery will hold their annual summer fruit tasting, so yummy, you won't want to miss it. For the kids, there will be face painting and other interactive games for all ages.

Adding to the festive atmosphere will be **live music both days.**

- **Vocal-Ease**, a local Swing and Big Band group will perform on Saturday and Sunday from 11 to 1 pm.
- On Saturday only **The Cool Tones** will join us from 1:30 to 2:15 p.m.
- Returning for their annual performance are the **Stony Ridge Ramblers** performing on Saturday from 2-4, and
- **Sycamore Strings Academy** performs on Sunday from 1:30-2:30 pm.
- To conclude the event will be the **Pleasanton Community Concert Band**, performing from 2:30-4 p.m.

name is pulled on Sunday at 4 pm you win the grand prize piece of original art valued at over \$200.00. Every hour winners receive a \$25.00 gift certificate to the nursery. Admission is FREE, Parking is FREE. Additional FREE parking is available at Sunset Business Park located at the corner of Concannon and Holmes-FREE SHUTTLES. For more information, contact the nursery at (925) 447-0280 or visit www.aldenlane.com.

NEW at Art Under the Oaks this year!

You can purchase a piece of the Mighty Entrance Oak from Alden Lane Nursery!

As most of you know this winter we lost a very important oak, right out front in our circle drive. The tree fell during a storm on the morning of January 4th. While this was a shock to all of us at the nursery, we were able to work with Linda Jeffery Sailors and the local art association to start an art project with the fallen branches. The artists were allowed to come and pick up pieces of the oak, create with them and bring them back for display and sale during the show. So this year, on July 12 & 13 during the show you will be able to see and purchase all the many diverse projects that were made from the fallen oak. The Heritage Oak project will remain on display until August 11th. Hope you will be able to join us for this very special exhibit.



Fresh Fruit Tasting at *Art Under the Oaks*

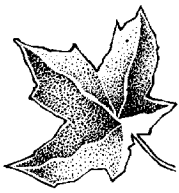
Now is the time to enjoy all the flavors of summer tree-ripened fruit and nothing beats the taste of a fruit freshly picked from your own tree. Next best will be fruit from Ed's trees in the Dave Wilson orchards!

Ed Laivo of Dave Wilson Nursery will be here at Art under the Oaks on Saturday, July 12th and Sunday, July 13th to offer you tastes of all the succulent peaches, nectarines and plums that ripen in mid July. They will also be available to give advice and consultation on all the different varieties of fruit and nut trees available. So come with all your questions and prepare to have your taste buds tingle.

Special order trees from Dave Wilson Nursery

Don't forget this is also the time to take advantage of our pre-season pricing on Special Order fruit trees. Our order books open this weekend for the next bare-root season; and you can choose from over 225 varieties on different rootstocks to fit all yards and gardens.

Come in and plan to hold a fruit tasting in your backyard!



Concrete Leaf Classes Are Here This Month!

Sue and Heather of Alden Lane will present concrete leaf classes this summer. Many folks have seen these spectacularly colorful leaves up in our greenhouse display and wanted to learn the process to make their very own creations. They make wonderful garden ornaments, birdbaths, and even fountains.

These leaves are not made from molds, but from the wonderful leaves abundant in the garden this time of year. It is a very fun project, and we will provide all the necessary materials and instruction to make a medium size 10"- 12" concrete leaf- just bring yourself, a pair of rubber gloves and clothes you can get dirty. You will leave the finished project with us for a week to partially cure before taking it home. Once you make one leaf, you'll want to make more and more-it's very addicting because they come out so beautifully. We will equip you with the knowledge you need to create a garden full of exotic leaves.

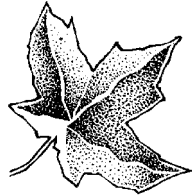
Class cost \$48.00 per class, 15 person class limit. Please pre-register with our Alden Lane cashiers. Please allow for 1½ to 2 hours class time. Classes are scheduled as follows:

Saturday, July 26th at 11:00 a.m.
Thursday, August 14th at 6:30 p.m.

Leaf Painting Seminar

Saturday, September 6th
at 11:00 a.m. -12:30 p.m.

Bring your leaf (they take about 3 weeks minimum to cure properly before painting) We will supply the paints and techniques to make your concrete leaf creations truly amazing! Class cost for the painting seminar is \$35.00. Pre-register with our cashiers. Class limited to 20 people per class.



And Some Like it Hot!

Do your bedding plants wilt in the heat of summer? Do the hot days bleach the color from everything in the garden? We have a suggestion for you! Plant some of these heat loving annuals and you'll have colorful and heat resilient flower beds into the fall months.

Zinnias are a familiar flower for summer gardens. They are colorful, available in a variety of heights, color combinations and flower styles. Zinnias love the heat! They look their best in temperatures over 90 degrees and they will bloom until late September, longer if we have an Indian Summer.

State Fair Mix	36 inches tall
Cut & Come Again	24 inches tall
Magellan	12 inches tall
Short Stuff Mix	8 inches tall
Crystal Mix	6 inches tall

Vinca, also known as *Periwinkle*, is another "must" for those hot August gardens. The flowers are similar in shape and size to impatiens but some of the mixes sport a red 'eye' in the center of the blossom. Choose from the following mixes: Cooler Series has Coconut, Grape, Peppermint and Rose colors. The Pacifica Series covers Apricot, Orchid, Red and Punch. Both mixes produce plants approximately 12 inches tall and 12 or so inches across.

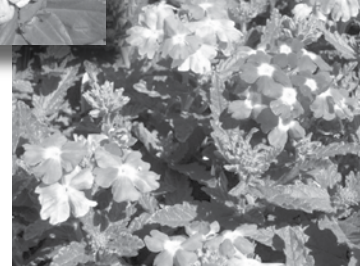
Annual Verbena is an excellent accent plant for containers, baskets and massed in flowerbeds. Each bloom is comprised of tiny flowers that form a cluster. It too loves the full sun. Choose from Burgundy, Peaches and Cream, Scarlet and White.



Zinnia



Vinca



Annual Verbena

Back by Popular Demand! Orchid University!!

This is your opportunity to learn the basics and beyond about the intricate world of ORCHIDS. Sue Fordyce will "de-mystify the mystical" and teach you what you need to know to grow-and BLOOM fabulous orchids. Many types of orchids will be discussed, both indoor and outdoor.

Please call Alden Lane at 925-447-0280 to sign up for the workshops which have limited registration. Classes will be held in Alden Lane's Ruthie's Room. The cost is \$30.00 for the Saturday half-day workshop.

Saturday, July 19th, 10:00 am to 1:00 pm.
Workshops I, II, & III all in one half-day session.

Keeping your Japanese Maples Healthy in the Heat.

Keep up with the watering. If you have hard water, this is the most critical time to use treated water. Use one tablespoon of vinegar per gallon of water. Wait 24 hours and use this water. Discard the last one inch of water in the container since this is where the minerals have precipitated. Make sure the maples are shaded during the hottest part of the day.

There are a few cultivars that are more tolerant to heat, for example: Bloodgood, FireGlow, Sherwood Flame, Sanjo Kaku, Shaina and consult with Alden Lane for others. July is also when the maple will go through their summer flush. This is their second growth cycle. **Do not fertilize this month.**

Gardening in a Changing Climate

An excerpt from "UC Davis Global Climate Change and Your Backyard"



Everyday in the news we read or hear about the effects of global climate change on our weather patterns, our wildlife and our water supplies. In response, many of us feel challenged to "reduce our carbon footprint" an expression that mandates we examine the way we use machines that burn fossil fuels, buy products that require high inputs of fuel to produce or transport, and use energy for lighting, heating and cooling.

If we want to make a change to reduce fossil energy use there are some simple things we can do: ride a bike, plant a tree, install solar panels and repair or replace our irrigation systems to make them more efficient.

How about changing the way we garden? What can we do in the garden to help reduce our carbon footprint? Replace water needy lawns and other high water use plants with drought tolerant plants will save water and the energy to pump it. Selecting more heat tolerant species may help our gardens thrive with increasing temperatures. Use of a combination of trees, woody shrubs, and grasses will help remove carbon dioxide from the atmosphere. In addition, if you incorporate lots of organic matter in your soil and apply organic mulches not only will the soil store more carbon dioxide but it also helps the soil better absorb and store water for use by plants.

For those who want to do more, consider harvesting rainwater from your roof and storing it in tanks for re-use

in the garden. Grading your landscape to direct water runoff to a depression before directing it to storm water drains will allow the water, in light to medium rains, to be absorbed back into the soil for use by garden plants.

More Water Wise Tips

Plant Nannies for vacation plant care.

These clever and attractive self-watering systems rely on a recycled container and the slow release action of terra cotta clay. They are available in three styles. "Plant " these watering Nannies into your interior plants, attach the appropriate-size bottle full of water before you leave on an extended trip and rely on the plant nanny to tend to your water needs while you're away.

Unique siphon process releases water only when the plant begins to dry so you use just the right amount of water for plants as they request it. You can leave for vacation and not worry about the watering.

STEP 1: Insert the ceramic stake into a plant. The unique shape (patent pending) prevents root damage during insertion. Slow rotation of the stake moves soil and roots aside easily.

STEP 2: Fill and attach a plastic soda or water bottle to the Plant Nanny insert. Place your finger over the unique release port (patent pending) and invert the bottle. Remove your finger from the port as you set the adaptor into the stake for drip free and easy refilling.

Also available as a decorative watering globe . . . Beautifully fluted glass watering globes extend the time between watering. Excellent for use in indoor plants and container gardens. Can be used in the garden when transplanting seedlings.

Water Wise Plant Suggestions

As you are reworking parts of your garden consider lovely landscape additions that are a bit less thirsty. In addition to our own California natives there are many "Mediterranean" plants that hail from far away places that too are particularly suited to our mild wet winters and mostly rainless summer dry climate. Native plants from around the Mediterranean Sea, South

Africa and parts of Australia & California are all part of this wonderfully diverse plant palate for us to build our unthirsty landscapes with.

Of course all newly planted plants will require a little extra TLC to get established but when their roots are deep enough they become very water wise.



Here are some lovely "Water Wise" options

Low growing plants including many colorful succulents

- Aoneium succulent varieites
- Apentia
- Iceplant
- Gazania
- Rosemary varieties
- Baccharis
- Cacti varieties
- Ceanothus varieties
- Cotoneaster varieties
- Sedum varieties
- Sempervivum
- Thyme varieties

Colorful Perennials/Succulents

- Aloes
- Lavender
- Limonium perezii (Sea Lavender Statice)
- Lantana
- Achillea (Yarrows)
- Kniphofia (Red Hot Pokers)
- Salvia varieties (Sage)

Medium Height Shrubs

- Callistemon (Bottle Brush)
- Ceanothus
- Grevillea
- Plumbago
- Rhus ovata (Sugar Bush)
- Teucrium (Bush Germander)

Large Shrubs/Perennials

- Ceanothus varieties
- Ceris occidentalis
- Dodonaea
- Fremontodendron
- Romneya coulteri (Matilja Poppy)
- Rhamnus varieties (Buckthorn)
- Xylosma

Trees

- Arbutus varieties (Strawberry Tree)
- Eriobotrya (Loquats)
- Olea (Olives)
- Heteromeles (Toyon)
- Palm varieties
- Pine varieties
- Pistachia chinensis (Chinese Pistache)
- Quercus varieties (Oaks)
- Rhus lancea (African Sumac)
- Robinia (Loquats)
- Schinus molle (California Pepper)

Vines

- Bougainvillea
- Campsis
- Solanum jasminoides
- Wisteria

Quilting In the Garden 2008

September 27th & 28th



Quilting in the Garden is held each September at Alden Lane Nursery. This year we are pleased to be hanging the work of local artists, all hanging from the majestic Oaks at Alden Lane. The quilt show in the nursery is free and the lecture series will have a nominal charge.

Our 11th Annual Quilting in the Garden will be held on Saturday, September 27 & Sunday, September 28th from 9am to 4pm with a class offered on Friday, September 25th.

Featured artists this year include:

Joen Wolfrom, one of the pioneers of contemporary quiltmaking and the innovator of two new genres, Joen's landscape quilts, innovative log cabin quilts, and free flowing curved pieced quilts have brought her international

acclaim. Joen has authored twelve books and many products to help quilters succeed.

Melinda Bula will be here with her fabulous fusible flowers quilts. Unique, with the wonderful look of a painting she uses fabric and thread to create beautifully artistic quilts. Her first new book is out, called cutting Garden Quilts, and she is working on a line of fabric to be out later this year.

Alex Anderson will be here. Come and meet the co-host of the new internet show "The Quilt Show" with Ricky Tims, www.thequiltshow.com. Alex will be here during the show on Saturday and Sunday and will be teaching class on Thursday.

Cindy Needham will also be sharing her love of Vintage Linen Wholecloth quilting when she teaches on Friday September 26th. Cindy also brings her expertise in thread to a Thread Bar on Saturday September 27 from 12 - 2 pm. Come and learn all about choosing threads for machine quilting. This class does have a fee, all fees and class information

available at our website, www.aldenlane.com, click on Quilting in the Garden.

You can be a featured artist as well as we will be accepting your quilts for display. You may enter a maximum of 4 quilts for the show. Go to www.aldenlane.com for rules and restrictions. All photos and forms must be delivered to Alden Lane Nursery by August 11th to be considered for showing.

The Budding beginners area will be here again, encouraging the joys of quilting with everyone who's wanted to give it a try. Amador Valley Quilters will offer encouragement on both days.

We'll have a variety of quilting, craft and food vendors to fill your creative appetites.

Our hotel is the Hilton Garden Inn in Livermore, you can reach them at (925) 292-2000, mention quilting in the garden to receive a \$69.00 room rate, or as an alternate hotel you can call Ramon at Holiday Inn Express at (925) 961-9500,

their room rate is \$75.00 and includes a full breakfast.

For more information on **Quilting in the Garden 2008** please visit our website at www.aldenlane.com.



Win A 5 Gallon Crape Myrtle

Win a Crape Myrtle (tree form) plus Planting Supplies



It is the perfect tree for a small garden or patio, or a flowerful accent in the garden. Crape Myrtle is just the tree for the Livermore Valley. It loves hot sun and blooms bountifully!

Planting supplies include:

- ★ 1 bag (2 cu. ft.) Planting Mix
- ★ Stakes
- ★ Master Start Fertilizer

A \$70.00 Value

No purchase necessary. Need not

be present to win. Drawing held on July 31, 2008.

CRAPE MYRTLE

July 2008

Name: _____

Address: _____

City: _____

Phone: _____

Email: _____

Yes, I would like to receive the newsletter online.

SPECIAL COUPON

Present This Coupon & A Canned Food Item
TO RECEIVE FREE

La
Lavande
Lemon
Verbena
Soap!!



(\$1.99 Value)

Food Donations are Optional. All donations go to local relief agencies. One coupon per family, please!
Offer Good July 1-31, 2008.

HOW TO FIND ALDEN LANE NURSERY



*Alden Lane Nursery will be closed the Fourth of July.
Remember to shop early for your holiday flowers!*



981 Alden Lane
Livermore, CA 94550
(925) 447-0280

Change Service Requested

IMPORTANT!
Time Critical
Please Deliver Promptly

PRSR STD
U.S. POSTAGE
PAID
PERMIT #274
Livermore, CA