



# Alden Lane Nursery Newsletter

JUNE 2010

Serving You Since 1955

981 Alden Lane, Livermore, CA • [www.aldenlane.com](http://www.aldenlane.com) • (925) 447-0280

## Announcements

- **Watch the Valley Gardener** on TV30 for great gardening tips with host Jacquie Williams-Courtright at 7:30 am and 1:30 p.m. Monday - Friday and repeated on Saturday at 7:30 a.m., 11:00 a.m. and 4:00 p.m. & Sunday at 7:30 a.m., 11 a.m., 1 p.m. and 4 p.m., or catch her on TV30.org.
- **SAVE THE DATE!** The **Livermore Amador Valley Garden Club** meeting has been scheduled to take place here – at Alden Lane Nursery on Thursday, June 10th. The evening will start with a Pot-Luck Social at 6:30 p.m. For info call Lydia at 461-1725.
- Plan to attend the **Alameda County Fair** – June 23 to July 11. (The fair is closed on Tuesdays). Buy Advanced Sale Fair Tickets at the nursery through June 22nd. Log in to [www.alamedacountyfair.com](http://www.alamedacountyfair.com) for more information.
- **Bonsai Club** meetings on the 3rd Saturday of each month – 2 p.m. at Alden Lane Nursery. Come one, come all!
- **Composting Information.** Call the Rotline, 510-444-SOIL for information on starting your own composting pile or visit the website at [www.stopwaste.org](http://www.stopwaste.org).
- **Orchids 101.** Need a refresher course on refreshing your orchids? Join us Saturday, June 26th at 11 am for Orchids 101. **The cost is \$10 and bring a friend for free!** Sue will cover all the basics at this 1½ hour “Boot Camp” to orchid success. Call 925-447-0280 and sign up with our cashiers today!

---

---

### Alden Lane Nursery Hours

Open daily from  
8:30 a.m. to 6:00 p.m.

## June is a Month of Celebrations Black & Blueberry Festival

**Come out and JAM with toe tappin’ music and lots of tasty fun!**



Come out and make merry at our new **BERRY FESTIVAL** on Saturday and Sunday, June 19 and 20th from 10 to 4. Bring the whole family for **Free Berry Tasting**. We will also have fresh made berry pies, jams, syrups and more for sale, made from local berries.

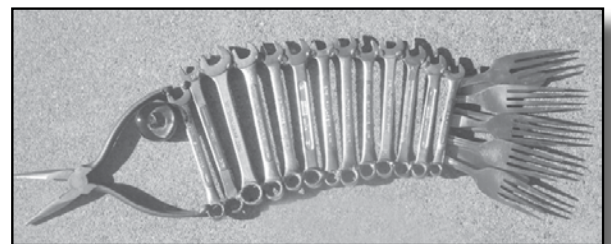
We have strawberries, blueberries, blackberries, olallieberries - if it's in season we got 'em fresh from local growers. Don't miss our **“Growing Berries” seminar** with Josh on **Saturday at 11 a.m.** The cost is \$5.00, and bring a friend for free.

We are also featuring a **Blackberry Jam Making Session** with Donna on **Saturday at 11 a.m. to 1 p.m.** She will share her expertise, and all those present will go home with a jar of jam and the fresh knowledge of an old fashioned kitchen art that can be passed on from generation to generation. The cost for the class is \$15.00 plus tax and the enrollment is limited, so sign up with our Alden Lane Cashiers **SOON**.

This Festival runs both Saturday AND Sunday, so bring Dad out for a glass of Blackberry Tea and Berry Tasting on Fathers' Day, and make a day of it! **Music provided by Jack Pollard's Party of Two** from 12:30 - 2:30 both days.

## Remember Dad on Father's Day – June 20th

Father's day is right around the corner, June 20th. For dear old dad we have some fun fish shaped barbeque grill tools and “old guys rule” T-shirts for that special dad who loves to fish and grill. For the dad who likes tools we have very unique wall art “Fab Fish” made from recycled tools in the shape of fish. Great for the office, workshop or patio.



Come by the nursery for even more great gift suggestions for dad!

- Shiny new tools for his gardening collection
- Statuary benches, arbors, garden art and more to create the feel of an outdoor room for relaxing.
- Cheerful colorbowls
- Lush houseplants for his office that will beautify and clean the air.
- Decorative containers to fill with plants of his choice for deck and patio.
- Dorfman Pacific hats so Dad has a “cool head.”
- His own orchard of fruit filled trees – citrus, cherries, peaches, nectarines and more are available here at Alden Lane Nursery.

# Mark your calendars for . . . *Art Under the Oaks*

July 24th & 25th from 11:00 a.m. - 4:00 p.m.

This is the **24th Annual Art Under the Oaks**, and this year promises to continue to delight the art, wine, music and fruit lover! We'll have local wineries pouring samples, local artists will be on hand demonstrating their craft, music will fill the grounds, and Dave Wilson Nursery will hold their annual summer fruit tasting — so yummy, you won't want to miss it!! You can purchase tasty treats from Sweet & Savory Bakery and Café while taking in the event. The Valley Woodcarvers will be presenting a special show to include carvings from the old flagpole from downtown Livermore.

There are **raffle prizes** every hour. If your name is pulled on Sunday at 4 p.m., you'll win the Grand Prize piece of original art valued at over \$200.00. Every hour winners receive a \$25.00 gift certificate to the Nursery.

**NEW THIS YEAR** – paint and take home your own Concrete Leaf Garden Art. Sue will have pre-cast leaves you can purchase and paint. The cost is \$29.99. Join the fun from 12 - 3 p.m. each day.

Music lovers can enjoy live music both days. **Vocal Ease** will perform on Saturday from 11-1 p.m. Also playing is **Extended Roots**, performing Saturday from 1-2 p.m. Returning for their annual performance - the **Stony Ridge Ramblers**, performing on Saturday from 2-4 p.m.

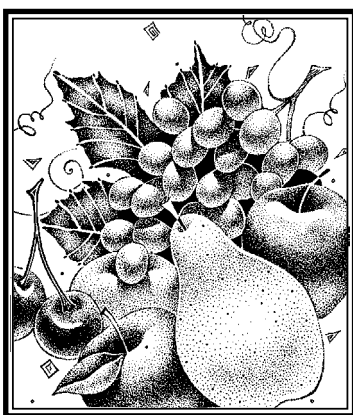
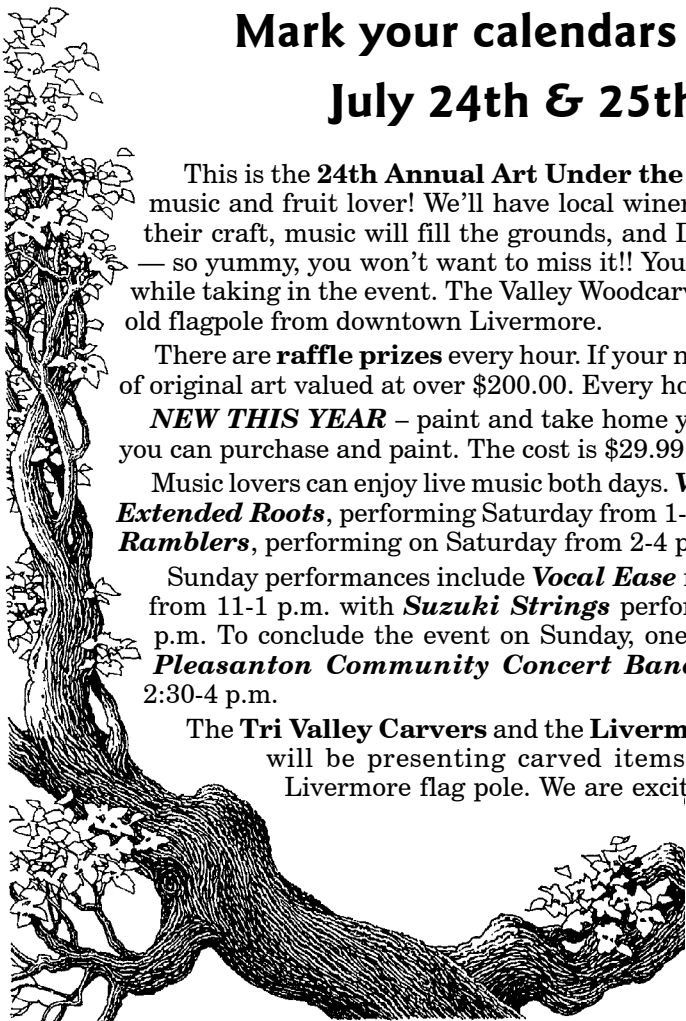
Sunday performances include **Vocal Ease** for an encore, playing from 11-1 p.m. with **Suzuki Strings** performing from 1:30-2:30 p.m. To conclude the event on Sunday, one of our favorites, the **Pleasanton Community Concert Band** will perform from 2:30-4 p.m.

The **Tri Valley Carvers** and the **Livermore Heritage Guild** will be presenting carved items made from the old Livermore flag pole. We are excited to be able to offer these unique items, allowing you to purchase a piece of Livermore history.

Admission is FREE, parking is FREE. Additional FREE parking is

available at Sunset Business Park located at the corner of Concannon and Holmes with FREE SHUTTLES.

For more information, contact the nursery at (925) 447-0280 or visit [www.aldenlane.com](http://www.aldenlane.com).



## ATTENTION ALL BACKYARD FRUIT ENTHUSIASTS

Bumper crops and heavy harvests await those who attend our monthly fruit growing seminars. Get in depth instruction on a different fruit each month, as well as techniques in pruning, disease control, and much more! We will cover the entire "backyard orchard" over the year including grapes, berries, and citrus fruits.

We want you to be the most successful you can be in achieving your goals of a fruitful, nutritious lifestyle. Attend multiple classes to earn a ticket to the **2010 Fall Harvest Recipe Party**, and get "Alden Lane Certified" as an official Backyard Orchard specialist! Giveaway items, information hand-outs, and raffle prizes will be available at every class. All classes run from 11 – 12 noon with extra time for Q & A and will **cost \$5 (bring a friend for free!)** Call ahead to prepay and reserve a seat.

Here's what's being offered over the summer:

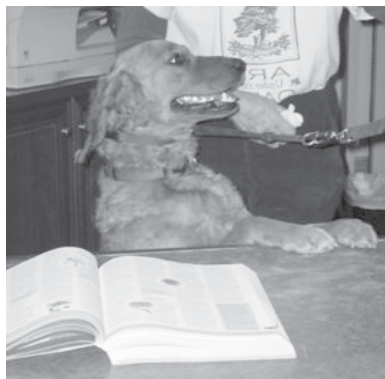
**Saturday, June 19th** • *"Berries", Kiwi & Guava*

**Saturday, July 17th** • *Summer Pruning & Fruit Thinning*

**Saturday, August 21st** • *Apricot, Plum, & Nut Trees*

# Notes for June Gardening

- Protect Japanese Maples; apply **Cloud Cover** to the foliage before the end of June and then monthly thereafter to protect the leaves from burning.
- Graduations and weddings** are coming up this month! Stop by the nursery for great gift ideas or a gift card.
- And don't forget Dad!** Alden Lane has many wonderful gifts for him. Choose from fragrant Citrus trees, a handy gardener's tool belt with pockets for his tools and gloves. Roses to perfume the garden and remind him of your love and so much more!
- Plant 4-inch & gallon can vegetable plants and save several weeks of growing time. Remember to protect them from hungry snails, slugs, and bugs with pet safe **Sluggo Plus**.
- Remember to **water plants under eaves** and in hidden corners. Soak hanging baskets and container plants during the summer heat.
- The **Alameda County Fair** opens Wednesday, June 23rd make plans to enter your prize-winning flowers and vegetables.
- Before your cherries and other summer fruit begin to ripen, protect them from hungry birds with bird scare tape (shiny tape that moves in the wind), plastic netting, and plastic owls.
- Hungry tomato hornworms as well as geranium budworms and other caterpillars are ready to munch on your garden. Control them with earth friendly **Safer's B.t. Caterpillar Killer**.
- Before you have trouble with blossom end rot in your tomatoes use **Foli-cal**. Blossom end rot creates a leathery brown patch at the bottom of a tomato and is caused by insufficient calcium
- Mulching makes the summer easier on your garden. It retains moisture and helps minimize weeds. Use a 3 to 4 inch layer of **Master Nursery Gold Rush** for the best results.
- Spruce up the garden with pots of red, white and blue flowers! We have lots of colorful blooming plants to make holiday parties and barbeques all the more enjoyable. **Shop early because the nursery will be closed on July 4th.**



## Hailey's Comments

*Garden Greetings to one and all. I am Hailey, the resident canine of Alden Lane Garden Center. June is among us and along with June comes Graduations, Weddings and in dog lore: Wettings. Paws down, the coolest trick to take the edge off the heat is a romp on the lawn through the spraying*

*sprinkler. Why not consider natural and organic lawn care practices that are kid and pet friendly. Nature's Green Organic Lawn Food improves soil structure and rewards you with Blue-Ribbon turf performance. Set aside the chemicals – go natural. Concern Corn Gluten weed prevention is safe to the beneficial bugs, soil organisms, and water ponds. I am also partial to Beneficial Nematodes which are naturally effective against FLEA LARVAE and 250 species of turf damaging grubs. What fun to romp on a fresh grown lawn that is chemical free.*

Paws for Reflection:

*When a dog runs at you, whistle for him.*

~Henry David Thoreau

*The most valuable lesson man has learned from his dog is to kick a few blades of grass over it and move on.*

~Robert Braul

## LEAFMANIA!

Our June Concrete Leaf Class is rolling around SOON — so sign up you and your friends for this fun experience! We wish you could see the amazing works of art — no two



are alike, and they make a stunning statement in your garden décor.

**Our next "making" class is June 19**

**at 10 am** (with a painting class to follow when it is cured a couple of weeks later), and our classes are getting full, so pre-register at our cashiers. The cost for the class ("making" and painting) is \$75.00 plus tax, and includes materials, instruction, a take-home tutorial (and best of all- clean up!).

Just come in clothes you can get a bit messy in (think mud pies...) and join us. No skill required, just the desire to have a good time and learn- you will be very pleased with the fabulous results! Just check out our website at [www.aldenlane.com](http://www.aldenlane.com) for more dates, times and pictures.

# It's Not TOO Late!

## Plant Your Summer Vegetable Gardening

June is a great month to plant a vegetable garden. Alden Lane has a good selection of more mature vegetables that will help you with growing time. Stop by the Nursery and let us get you growing this season! For those gardeners who have planted their vegetable gardens and are looking forward to tasty, mouth watering tomatoes, snappy beans, sweet corn or crunchy peppers, take action now to improve the quality of harvest and prolong it too!

☛ **1.** First, fertilize the vegetable garden with **Master's Tomato and Vegetable Food**. Remember it's better to under fertilize than over fertilize. And, never, feed a thirsty plant. Water the garden thoroughly the day before feeding.

☛ **2.** **Water** established tomato plants deeply and less



frequently. These plants have deep roots and frequent watering encourages plant growth without much fruit production. Cucumbers on the other hand need to be kept evenly moist to help prevent them from being bitter.

☛ **3.** **Train** cucumbers, squash and pole beans to climb trellises or poles to save space. Pick the fruit on the small size.

This will give you a sweeter, milder tasting vegetable. For tangy peppers, pick when green, or wait until they are red for sweetness.

☛ **4.** Control garden pests before they control you! Snails and slugs are out in force, as well as earwigs, cutworms, whiteflies, and tomato hornworms. Consult a California Certified Nursery Professional™ at Alden Lane Nursery for the best non-toxic control around vegetables.

### Recipe for Good Garden Soil!

## Good Garden Soil Starts Here!!

If you are preparing a vegetable or flower garden bed, here's a tried and true soil preparation recipe that works wonders. It lightens our heavy soil, nourishes it and buffers the pH to make it 'just right' for the success of your vegetables and flowers.

#### GOOD GARDEN SOIL!

For each 100 square feet add:

- 5 to 8- 2 cubic ft. bags **Master Gold Rush** or **Bumper Crop**®
- 5 lbs. **Iron Sulfate** to acidify and add iron.
- 10 lbs. **Master Vegetable Food** or **Master Flower Food**, **Master Formula 49** can be used for ground covers.
- 50 lbs. **Gypsum**. It loosens hard soils as it adds sulfur & calcium. (An excellent addition in our heavy soil.) Try out the new Liquid Gypsum

Mix well with your soil to an 8" depth and water well.

## Enter The County Fair Amateur Gardening Competition

	ENTRY	DATES	TIME	DELIVER TO
<b>Rose Show</b>	Period I	Saturday, June 26	7 a.m. - 9 a.m.	Ag. Bldg. "P" West end (Use Valley Ave)
	Period 2	Wednesday, July 7	7 a.m. - 9 a.m.	Ag. Bldg. "P" West end (Use Valley Ave)
<b>Potted Plants - Cut Flowers, Floral Designs, Arrangements &amp; Produce</b>	Period 1	Wednesday June 23	7 a.m. - 9 a.m.	Ag. Bldg. "P" West end (Use Valley Ave)
	Period 2	Saturday, July 3	7 a.m. - 9 a.m.	Ag. Bldg. "P" West end (Use Valley Ave)
	<b>Bonsai Show</b>	Wednesday, June 30	7 a.m. - 9 a.m.	Ag. Bldg. "P" West end (Use Valley Ave)

- Bring address labels for easy entry. Entry fee 75¢ per entry for 1 to 8 entries. After that - **FREE**.
- Bonsai entry fee 75¢ per exhibit.
- All cars must be removed from the delivery area after drop off by 9:30 a.m. Pick-up by claim check only.
- For more details go to [www.AlamedaCountyFair.com](http://www.AlamedaCountyFair.com), click on Exhibit Catalog, look at Exhibit Categories and click on Amateur Gardening or call (925) 426-7600.





If you are feeling the heat of the summer come in and enjoy our **Cool Fern Canyon Collection**. It will transport you into that cool summer

## Garden & Home Accessories

New gazing balls have arrived! This traditional garden ornament comes in array of colors: Purple, green, silver, blue, red, swirled, iridescent and many more. As you are relaxing on your patio or in the backyard imagine how beautiful your garden will look as it's reflected in a gazing ball.



mountain retreat. The products in this grouping are characterized by ferns in many shapes and sizes. Beautiful table top pieces, artwork, slate cheese boards with fern handled cheese spreaders and much more. Come in and take in that feeling of a cool fern canyon.



## 13th Annual Quilting In the Garden 2010 September 25th - 26th

Quilting in the Garden is held each September at Alden Lane Nursery where you'll view quilts hung from our majestic oaks. This year's featured artist is **Sue Nichels**.

Guest artists **Denise Sheehan** and **Elizabeth Scott** will also be showing their quilts. Public quilt entries are welcomed. The quilt show in the nursery is **FREE** and the lecture series will have a nominal charge.

The show will be held on September 25th and 26th from 9:00 a.m. to 4:00 p.m. and will include a lecture & workshop series starting on Thursday, September 23rd.



For more information on Quilting in the Garden 2010 please visit our website [www.aldenlane.com](http://www.aldenlane.com).

## Graduations, Weddings, & Teacher Appreciation



This June give your favorite bride and groom or graduate a gift that will keep giving through the years. Alden Lane has a great selection of gift giving ideas. Drop by and let us show you some of the following:

- A houseplant for new apartment or dorm.
- Gift baskets for the new garden filled with seeds, gloves and gardening tools of all kinds!
- Outdoor thermometers and clocks
- Garden candles and holders.
- Accessories for the home and garden
- Give a tree to commemorate the occasion
- A piece of garden statuary that will improve with the passage of time.
- A flowering plant that will remind you of the occasion when it blooms on the anniversary each year.
- A wall plaque with words of welcome

Remember your favorite teachers with a blooming plant or special treasure from our gift shop. We're happy to help select and wrap.

Of course, an Alden Lane gift card is always welcome.

# Keeping your Japanese Maples Healthy in the Heat

If your maples are in containers, or in the landscape, you will need to keep their soil moist, but not soggy. They do not like to have their "feet" soaked, so make sure that the soil drains quickly. In a container it means that the container itself is not in a pool of water. Set your container on ceramic feet that will allow the water to drain away. In the landscape, make sure that there is no standing water after the maple is watered. If there is water, amend your soil. Maple expert Barry Hoffer recommends the following soil mix:

## Soil formula for containers:

- 3/4 Small Bark, 1/4 size (Western Bark Mini Nuggets)
- 1/4 Acid Soil (Master Nursery Acid Planting Soil Mix)
- 2 cups Perlite

Mix the three items in a wheel barrel/large container so that it is ready to use.

## Soil formula for landscape:

- 1/3 Small Bark, 1/4 size (Western Bark Mini Nuggets)
- 1/3 Acid Soil (Master Nursery Acid Planting Soil Mix)
- 1/3 Native Soil
- 2 cups Perlite

Mix the four items in a wheel barrel/large container so that it is ready to use



Morning sun is okay, but make sure that your maple only gets filtered sunlight or shade after 1pm. Maples also like acid soil and this is the time to make sure that you continue to treat your hard water. Come in and pick up a hand out. Finally do not fertilize this month.

## Spray On Sunscreen for your Japanese Maples

Japanese Maples are perfectly comfortable in Portland, Oregon where the summer sky is softened with billowy clouds and an occasional shower. The valley's dry summer climate on the other hand calls for a bit of special protection. Our hot, dry and sometimes windy summers can turn the leaf edges of Japanese Maples crispy. Spray the leaves with **Cloud Cover** before the end of June and then monthly thereafter to protect the leaves from moisture loss. One creative customer threaded drip irrigation tubing topped with a mist head up into the maple's canopy. Turned on hot days it provides welcome cooling.



## Kidz Club News

- Kidz Club is an hour long experience packed with gardening fun at our Alden Lane Farm. Kidz Club is designed for kids 5-10 years old. The cost is \$10.00 per child. Please pre-reserve 5 days in advance of a class. Pick up a flyer

for all the Summer activities for kids at our cashiers, or check it out online on our webpage - Summer Fun for Kids.

- Visit our Alden Lane Farm to **check out our chickens and plant some seeds**, and then learn how important our **squirmy, wormy friends** of the earth are to our garden. You will also make your very own worm farm to take home, complete with special compost worms that do a wonderful job of making our garden soil perfect for growing flowers and veggies. On Wednesday, June 23 from 2 - 3 pm, meet at the big oak next to the entrance arch at Alden Lane.

## Edibles in the Garden

Expand your horizons beyond the vegetable garden and into the landscape by training some berries on a fence or wall. Our **BERRY PATCH** has a variety of cane berries such as Raspberries and Blackberries, as well as many options for Blueberries, Strawberries, and of course Table and Wine Grapes.

We have a large selection of **DWARF CITRUS** available for planting in the landscape or in containers! Meyer Lemon continues to be our gardener's top choice for home planting with its sweet flavor, ever-bearing habit, and superior frost tolerance. Also look for Bears Seedless Lime - the classic bartender lime, or Washington Naval Orange a tri-valley favorite for decades!

Don't forget about fruit trees!! There are many varieties that don't require much pruning or spraying and can serve more than one function. **FUYU PERSIMMON** is a low maintenance fruiting tree that also makes a great shade tree with excellent fall color.

**POMEGRANATES** can also provide an attractive flowering privacy hedge. Also consider planting an espaliered fruit tree against a wall or fence to provide fruit as well as conversation.

## Ornamental Concrete Wall Art

*Join us Saturday, June 5th for an ornamental concrete workshop.*

We will mix and pour concrete into shaped forms and, while the concrete is still wet, decorate pieces with glass marbles, mosaic tiles, etc. Each child should have enough time to create 2 wall pieces. Finished pieces will be suitable for hanging on a patio wall or setting out into the garden. **This is a perfect opportunity to make a personalized gift for Dad.**

Suitable for kids of any age; younger kids should be accompanied by an adult for assistance.

The class will run from 3:30 to 4:30 pm. You must call ahead to reserve your spot, 925-447-0280. The cost is \$20.00.



# Win A Watering Kit

Make your watering tasks easier to control with a flexible hose that is made to last a lifetime, combined with a water wand that gives you the best control to save water!

A \$55.00 Value

No purchase necessary. Need not be present to win. Drawing to be held June 30, 2010.

## WATERING KIT

June 2010

Name: \_\_\_\_\_

Address: \_\_\_\_\_

City: \_\_\_\_\_

Phone: \_\_\_\_\_

Email: \_\_\_\_\_

Yes, I would like to receive the newsletter online.

## Let There Be Light! House/Office Plants & Light Requirements

Most people choose a house plant which has the right shape, appearance and price. It is essential, however, that it should also be right for the light and warmth it will receive in its new home. Each plant has its own likes and dislikes, and it is important to find out a little more about those facts before you purchase your plant. Even when carefully selected, your new plant may get a little homesick even in good conditions, and some varieties of plants may go through a temporary shock until they get acclimated to their new abode. Don't assume that conditions must be wrong if the plant looks a little sad for the first few weeks.

Here are some guidelines for figuring out the right indoor light for your houseplant:

**Shade:** Well away from a window, but enough light for you to be able to read a newspaper. *Aglaonema*, Many types of *Philodendron*, *Mother in Laws Tongue*.

**Semi Shade:** Near a sunless window or some distance away from a bright window. *Aglaonema*, many varieties of *Dracaena*, (including dragon tree, and corn plant), most Ferns, *Fittonia*, *Prayer Plants*, *Ivy*, *Philodendron*, *Lady Palm*, *Lucky Bamboo*, *Kentia Palm* and *Peace Lily*.



**Bright but sunless:** On a sunless windowsill or near a bright window. *Anthurium*, *Begonia*, *Bromeliad*, *Spider Plants*, *Dumb Cane*, *Philodendron*, *Peperomea (Mouse Tail)*, *Aluminum Plant*, *Creeping Charlie*, *Schefflera*, *Peace Lily*, *Polka Dot Plants*, *Bamboo Palm*, *Grape Ivy*, *Weeping Fig*, *Fiddle Leaf Fig* and *African Violets*.

**Some direct sunlight** on, or very close, to an east or west facing windowsill: May need protection from hot summer sun. *Cordyline*, *Purple Velvet Plant*, *Hoya (Wax Plant)* *African Violet*, *Croton*, *Lipstick Plant*, and *Goldfish Plant*. Many orchids, Such as *Phalaenopsis* and *Oncidium*s, *Sago*

## Summertime Houseplant Vacation!

Summertime refreshment is not only for the humans, you know- houseplants and orchids would revel in a little outdoor vacation of their own. In summer, and even into fall when the nighttime temps are mild is a perfect time to move some of your houseplants onto the porch or in an area where they get shade and shelter from strong drying winds. Outdoor light, even in the shade gives your houseplants, and especially your indoor orchids, an extra shot of light to refresh them and give them extra energy for the winter ahead. Remember, outdoors the plants will need a bit more regular watering, as they will dry out quickly. When it comes time to bring them indoors, check them over carefully so you don't transfer unwanted pests back inside.

*Palm*, *Rabbits Foot Fern*, *Rubber Tree*, *Zygo Cactus*, *Begonias*.

**Sunny window** or very close to a south facing window: Light shading might be necessary in midsummer. *Cactus* and *succulents*, *Hoyas*, *Aloe*, and *Tillandsias*, thick leaf types of orchids, such as *Cattleyas* and *Vandas*.



981 Alden Lane  
Livermore, CA 94550  
(925) 447-0280

Change Service Requested

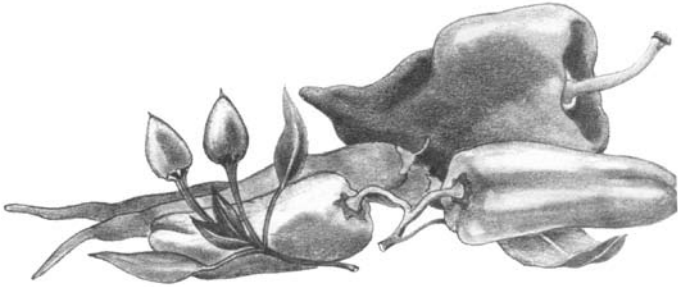
PRSRT STD  
U.S. POSTAGE  
**PAID**  
PERMIT #274  
Livermore, CA

**IMPORTANT!**  
Time Critical  
Please Deliver Promptly

# SPECIAL COUPON

Present This Coupon & A Canned Food Item  
TO RECEIVE FREE

## A 2" Pepper Plant!!



(99¢ Value)

Food Donations are Optional. All donations go to local relief agencies. One coupon per family, please!  
Offer Good June 1-30, 2010.

# HOW TO FIND ALDEN LANE NURSERY

