



# Alden Lane Nursery Newsletter

MAY 2010

Serving You Since 1955

981 Alden Lane, Livermore, CA • [www.aldenlane.com](http://www.aldenlane.com) • (925) 447-0280

## Announcements

- The **Livermore Amador Valley Garden Club** at Harvest Park Middle School, 4900 Valley Blvd., Pleasanton at 7 p.m. Guests are welcome. On Thursday, May 18th guest speaker Emma Connery will be discussing "Garden Friends and Garden Pests" – identification of bugs in the garden. Call Lydia at 461-1725 got more info.
- **Hidden Gardens of the Valley Garden Tour** (benefiting the Valley Humane Society), Sunday, May 16 from 10 am – 4 pm. The \$35 tickets are available at Alden Lane Nursery or online at [www.valleyhumane.org](http://www.valleyhumane.org). Call 925-918-0799 for more information.
- **Bringing Back the Natives Tour**, Sunday, May 16th from 10 a.m. - 4 p.m. Free self guided tour of 60 East Bay Gardens. For more information, visit [www.bringingbackthenatives.net](http://www.bringingbackthenatives.net).
- **Mt. Diablo Rose Society Spring Rose Show** is Saturday, May 1st at the Dublin Senior Center, 7600 Amador Valley Blvd., Dublin. Novice public entries welcome between 7 am & 9 am. Enjoy the show from 1- 4 pm.
- **The 70th Annual Pleasanton Public Rose Show**, sponsored by Alain Pinel, City of Pleasanton and Alden Lane Nursery, Saturday, May 8th at the Pleasanton Library, 400 Old Bernal Ave, Pleasanton.  
Enter cut flowers from 7:30 - 10:00 am.; Judging: 10 am - 12:30 pm; Show hours: Saturday, 1:00 - 5 pm; Award Ceremony is Sunday at 1:30 pm. All backyard novice entries are welcome. For more information visit [www.pleasantonroseshow.com](http://www.pleasantonroseshow.com).

## Plan a "Scentsational" Day for Mom on Mother's Day Weekend

May 8 & 9th  
11 a.m. - 4 p.m.

Take a walk through hundreds of roses and then enjoy our tent of fragrance where we will feature our most scented roses, stop by and make your own rose potpourri to take home; perfect to scent the car, your pillow, closet, or drawer. We'll also have a very special rose hand treatment to enjoy.

After a leisurely stroll, make your way to the patio where you can sip Lemonade Iced Tea with fresh made cookies. May is the very best time to walk through the roses and enjoy all the colors and scents. We hope you'll bring Mom in to enjoy this special time at the nursery. Cost is \$5.00 per person, reservations required, so call and sign up in advance (925) 447-0280.



## Concrete Leaf Class -

### A Special Gift for Mom!

If you love a woman who loves her garden, this is a great way to express your love in a creative way! Book a Concrete Leaf class for her (and yourself!) and make these wonderful works of garden art to enjoy for many years to come. Create this special memory May 22 at 10 am (and sign up for a painting class when the leaf has cured - in 2 weeks or more). The cost for this 2 part class is a one time fee of \$75.00 plus tax and includes all instruction, a take home tutorial of the process and recipe, and all materials.

*You'll make a memory- and a leaf!*

Please check out our website at [www.aldenlane.com](http://www.aldenlane.com) to see more dates



and times for classes throughout the Spring and Summer.

## It's Bonus Dollar Time!

See details inside.

\$\$\$ \$ \$ \$ \$ \$ \$

# Mark your calendars for . . . *Art Under the Oaks*

## July 24th & 25th from 11:00 a.m. - 4:00 p.m.

This is the **24th Annual Art Under the Oaks**, and this year promises to continue to delight the art, wine, music and fruit lover! We'll have local wineries pouring samples, local artists will be on hand demonstrating their craft, music will fill the grounds, and Dave Wilson Nursery will hold their annual summer fruit tasting — so yummy, you won't want to miss it!! You can purchase tasty treats from Sweet & Savory Bakery and Café while taking in the event. The Valley Woodcarvers will be presenting a special show to include carvings from the old flagpole from downtown Livermore.

There are raffle prizes every hour. If your name is pulled on Sunday at 4 p.m., you'll win the Grand Prize piece of original art valued at over \$200.00. Every hour winners receive a \$25.00 gift certificate to the Nursery.

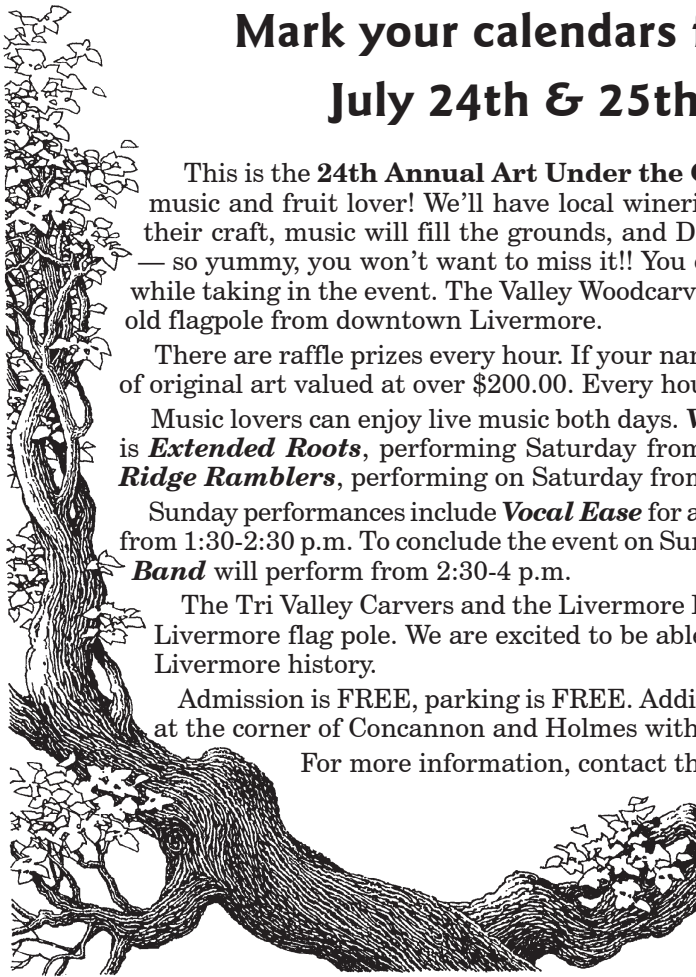
Music lovers can enjoy live music both days. **Vocal Ease** will perform on Saturday from 11-1 p.m. Also playing is **Extended Roots**, performing Saturday from 1-2 p.m. Returning for their annual performance - the **Stony Ridge Ramblers**, performing on Saturday from 2-4 p.m.

Sunday performances include **Vocal Ease** for an encore, playing from 11-1 p.m. with **Suzuki Strings** performing from 1:30-2:30 p.m. To conclude the event on Sunday, one of our favorites, the **Pleasanton Community Concert Band** will perform from 2:30-4 p.m.

The Tri Valley Carvers and the Livermore Heritage Guild will be presenting carved items made from the old Livermore flag pole. We are excited to be able to offer these unique items, allowing you to purchase a piece of Livermore history.

Admission is FREE, parking is FREE. Additional FREE parking is available at Sunset Business Park located at the corner of Concannon and Holmes with FREE SHUTTLES.

For more information, contact the nursery at (925) 447-0280 or visit [www.aldenlane.com](http://www.aldenlane.com).



## Japanese Maples

What could be more beautiful than a Japanese

Maple unfurling its delicate leaves in the spring? Japanese Maples have enjoyed many years of popularity in our gardens due to the varieties available for our many varied designs and locations.

At Alden Lane we carry a considerable range of Japanese Maples that tolerate the hot interior valley summers. They thrive in morning sun with some protection from hot dry winds. Maples are nearly trouble-free. Occasional aphids will attack in early spring, a blast from a hose is all that is needed to dislodge these unwanted guests. Do not use Safers Soap on maples as it will often defoliate them prematurely.

Major pruning ought to be completed during maples dormant period in early spring (late February – mid March) just as buds begin to swell. Any major reductions should be done in stages over years.

Maples like to be kept moist and have good drainage. The addition of fir bark or compost to our native soil is advisable in our area. Mounding is also advisable to counteract the clay soils of the valley. Apply **Cloud Cover** to the foliage before the end of June



and then monthly thereafter to keep leaves from scorching. Place a layer of mulch under the tree to insulate the soil. (Keep mulch 3 to 4 inches away from trunk.) One creative customer threaded drip irrigation tubing topped with a mist head up into the maple's canopy. Turned on for hot days to provide welcome cooling. Tapering off the amount but not regularity of water will help your maple 'color up' in the fall.

## SAVE THESE DATES!!

### Mosquito Fish Give Away

Drop by the nursery on **Saturday, May 8th** with a pail or bucket and take away some **FREE** mosquito fish for your ponds or large fountains. These fish are courtesy of the Mosquito Abatement District. The hours are from 10:00 a.m. to 2:00 p.m.

### Japanese Maple Class

Japanese Maple Expert **Barry Hoffer** will offer a **FREE seminar** on selecting maples for beautiful 'Spring' leaf color. He will also cover Japanese Maple care and culture. This **FREE class** will be held on **Saturday, May 29th** from 1:00 - 3:00 p.m. Call ahead to reserve a seat.

# Notes for May Gardening

Feed roses now and every two weeks for maximum rose production. Use **MaxSea plus Kelp Sea Life** for the trace elements and minerals.

**Thin apple and peach crops** if too much fruit has set, you'll get fewer but larger, juicier fruit.

Timing is important for lawn grub control. If you had trouble with lawn grubs last summer and fall, now is the time to ready a treatment plan for prevention. Treat your lawn in May with **Bonide Grub Beater** or **Nematodes** while the grubs are young and vulnerable.

**Ladybugs** to the rescue! Control aphids, beetles, scale and leafhoppers naturally.

Deep root water trees and shrubs. Never depend on lawn watering to take care of trees and shrubs or they will end up with surface roots. Begin deep watering with a **Ross Root Feeder** now and continue monthly through the hot summer season.

Do you have bugs on vegetables? Use **Take Down**. This is a broad spectrum organic, vegetable safe, pesticide made entirely of plant-based products. (Canola Oil and Pyrethrins are a derivative of a chrysanthemum plant of the same name.)

Scale insects affect citrus as well as a slew of ornamentals. Adults are little stationary bumps on stems and leaves. Offspring hide beneath mother's protective shell, venturing out as the weather warms searching for a new place to colonize. Control by spraying with **Boniide All Season Oil**. For tough cases on ornamental plants apply **Volek Oil mixed with Malathion**, or **Captain Jack's All Organic Spray**.

Often the first tomatoes to ripen are smitten with the leathery brown patch of rot known as **blossom end rot**. Generally caused from a calcium deficiency, Get ahead of the game by spraying the leaves now with **Monterey's Foli-cal**. Foli-cal is designed to supplement the plant's calcium needs with foliar feeding, reducing or eliminating the condition on tomatoes. Apply at 14 day intervals throughout the growing season.

Mulching does wonders for your garden As well as looking good, mulching conserves water and suppresses weeds and keeps roots cool. We suggest a mulch layer 4 inches thick. We are especially fond of **Micro-bark** because it looks good and breaks down relatively soon. Don't mulch right up to the plant trunk or stem. Leave 4 to 6 inches of breathing room.

Plant 4-inch vegetable plants and save several weeks of growing time. Remember to protect them from hungry snails and slugs with **Master Snail, Slug and Insect Control** or pet safe **Sluggo Plus**. It controls slugs, snails and insects.

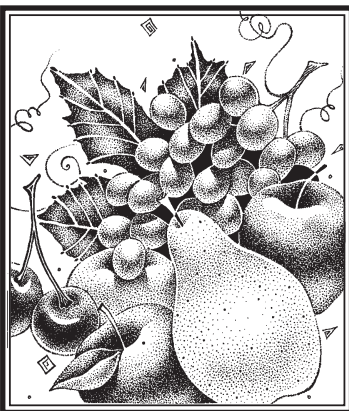
Prevent olive fruit set with **Florel Fruit Eliminator**. Spray the olive when the tree has just reached full bloom. Olive flowers are very small, so watch closely. Full bloom usually occurs in early May. Spray the whole tree thoroughly. We have the names of commercial spray companies that can help too.

Whitewash the trunks of fruit trees with **Tree Trunk White** to protect them from our summer heat. Applying a white wash coating to the trunk will reflect heat away from the tender tissue and protect the trees.

Regular feeding for Citrus. Citrus performs well with monthly light feedings of **Master's Citrus Food**. Make quarterly applications of **Iron Sulfate** for optimum feeding and greening.

Use **Turflon Ester** for Bermuda Grass control. You can safely apply Turflon Esther at this time of year to knock back Bermuda Grass to manageable levels. It also works wonders on Oxalis, a yellow clover look alike. (Read the label carefully, this is a valuable tool in the fight against weeds, but also has the ability to harm ornamentals nearby.)

Prep your roses for a second wave of bloom! Cut back and feed roses as the first set of blooms fade. Feed the roses to replenish using **Master Nursery Rose and Flower Food**. Water and stand back – roses typically rebloom 6 weeks after pruning and feeding.



## BACKYARD ORCHARD SEMINAR

Bumper crops and heavy harvests await those who attend our monthly fruit growing seminars. Get in depth instruction on a different fruit each month, as well as techniques in pruning, disease control, and much more! We will cover the entire "backyard orchard" over the year including grapes, berries, and citrus fruits. We want you to be the most successful you can be in achieving your goals of a fruitful, nutritious lifestyle. Attend multiple classes to earn a ticket to the **2010 Fall Harvest Recipe Party**, and get "Alden Lane Certified" as an official Backyard Orchard specialist! Giveaway items, information hand-outs, and raffle prizes will be available at every class. All classes are to run from 11 – 12 noon with extra time for Q & A and will **cost \$5 (bring a friend for free!)** Call ahead to prepay and reserve a seat.

**Saturday, May 15th • 11:00 - Noon**

*"Multigrafted Fruit – High Density Planting"*

Also learn about Integrated Pest Management for your garden!!

# Wear Your Beehive!! We're 55!!

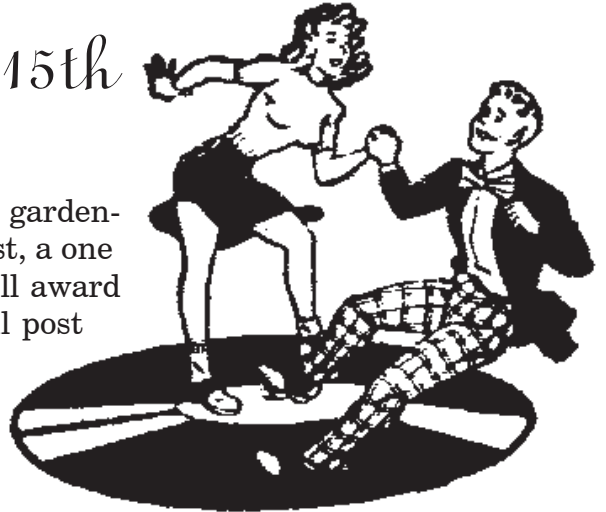
It's a Party!!! Saturday, May 15th

10:00 am - 4:00 pm

Come and join us as we celebrate 55 years of serving the gardening community. Wear your best 50's outfit and win the contest, a one hundred dollar gift certificate. To Alden Lane Nursery. We'll award a winner at the end of the day on Saturday May 15th. We'll post pictures on the website for everyone to see!

We'll have 50's music, 50's cars and best of all lots of CAKE!! Of course we'll bring out the hula hoops and skates are optional!

For *special anniversary bargains* look for the 50's record albums throughout the Nursery!!



## Take Care of Your Soil & Your Soil Will Take Care of Your Plants

Gardening is not as much about taking care of plants as it is about taking care of soil. If your soil is amended for improved texture, contains a balanced supply of nutrients and minerals and is teeming with microscopic life, your plants will probably thrive without much additional effort from you.

Three to four inches of organic material such as yard compost, Gold Rush or Bumper Crop worked into the top 8" of soil will yield a 12" deep layer of suitable garden soil that drains well, nurtures life and produces a respectable garden harvest. Ongoing care of this soil will result in a garden that produces better and better as the years pass.

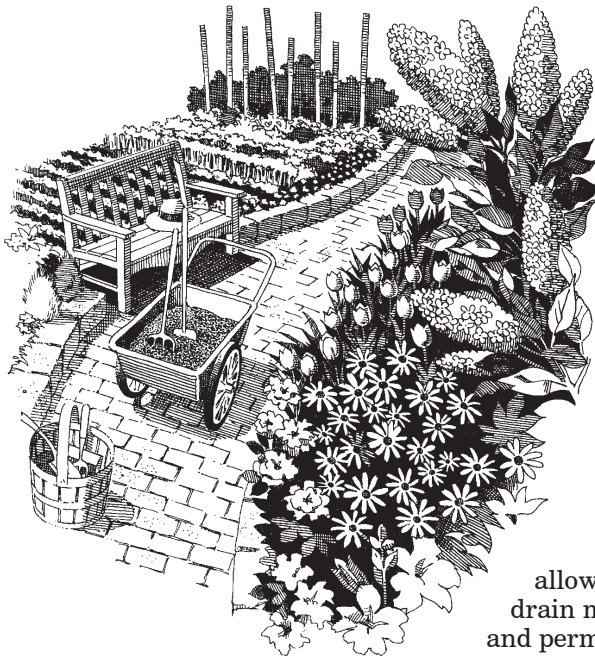
The following is a do list that can help you nurture your soil:

- ➔ **Raise the bed:** Improves drainage, helps warm the soil.
- ➔ **Incorporate organic material:** It acts as a wedge to hold clay soil open and

allows water to drain more freely and permit air to occupy more of the space

between soil particles.

- ➔ **Add Gypsum:** Helps leach salts from the soil, lowers pH (Try our new **Liquid Gypsum**)
- ➔ **Add mulch:** Apply 3" of bark or **Gold Rush** to reduce weeds, save water and moderate soil temperatures.
- ➔ **Add nutrients:** Fertilize with a mild fertilizer which includes micro-nutrients (**Formula 49** or **Maxsea**). Micro-nutrients are essential for healthy plant development and are sometimes missing from soils.
- ➔ **Nurture the soil microbes:** Apply **John and Bob's Soil Optimizer**. Microbes convert nutrients into forms the plant can use.
- ➔ **Water appropriately:** Water thoroughly but infrequently enough so that air is allowed back into soil between waterings, usually only every 3-10 days. Use an inexpensive **Moisture Meter** to judge soil moisture more accurately.



### Recipe for Good Garden Soil!

If you are preparing a vegetable or flower garden bed, here's a tried and true soil preparation recipe that works wonders. It lightens our heavy soil, nourishes it and buffers the pH to make it 'just right' for the success of your vegetable and flower seeds or transplants.

#### GOOD GARDEN SOIL!

For each 100 square feet add:

- 5 to 8— 2 cubic ft. bags **Master Gold Rush** or **Bumper Crop**®
- 5 lbs. **Iron Sulfate** to acidify and add iron.
- 10 lbs. **Master Vegetable Food** or **Master Flower Food**, **Master Formula 49** can be used for ground covers.
- 50 lbs. **Gypsum**. It loosens hard soils as it adds sulfur & calcium. (An excellent addition in our heavy soil.) Try out the new **Liquid Gypsum**

Mix well with your soil to an 8" depth and water well.

# Momma's Got a Brand New Bag!!

Wait until you see these adorable ceramic handbags. You won't believe your eyes! These bags look just the real designer handbags.

The clever part is that they are ceramic containers and ready to hold cosmetics or cotton balls in the bathroom, or candy and cookies in the kitchen. You'll find a million uses for them, and want to collect them all! Remember Mother's Day is May 9th and she'll be thrilled with one of these bags!!



## Wild Bird Presentation

Native Bird Connection  
presents

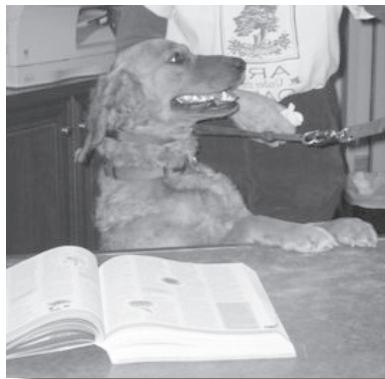
### RAPTORS!

May 29th from 1-3pm.

Tickets can be purchased in advance and the Cost is \$12.00 per person, children under 12 are free!

Please join Jenny Papka of Native Bird Connections as she shares several species of raptors in an afternoon to be remembered. During the outdoor presentation, live raptors will be shared up close and personal by handlers while Jenny illuminates the personal lives of the birds and involves the audience through questions and stories. Following the presentation, raptors and their handlers will conduct an informal visitation session at the stations for interested audience members to ask questions and share their stories with them.

[This is a benefit for the Native Bird Connection: All birds are fully permitted by US Fish and Wildlife and CA. Fish and Game. Native Bird Connections is an educational non-profit based in Martinez, CA. All donations and services are tax deductible. Presented by Hawk Talk hij@usamedia.tv.]



## Hailey's Comments

*Greetings to you and your canines. I am Hailey, resident nursery dog of Alden Lane Garden Center with a bird's eye view on this month's attractions. Every dog has their day, and this month, litters one and all, we recognize our mums. Your Alpha Female boasts "Best of Show" to your pedigree and she's foxy to her Alpha Male. Gather your litter mates and follow your nose to Alden Lane. Hunt for the perfect gift to express your sentiments for her. Sniff out those treasures displayed in the gift store. Herding a pack of decorative plants together will allow your mum the pleasure*

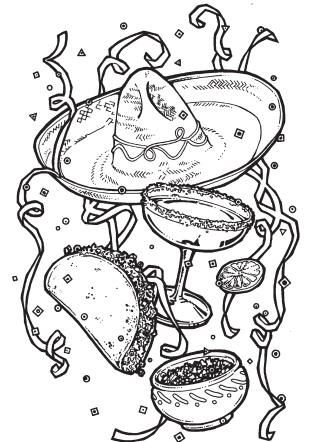
*of digging her own hole, carefully pawing the new plants into their home and be watch dog for new blossoms. If she is not a digger, elegant ferns and blooming orchids are available in the greenhouse kennel under Sue's training.*

*In observance of "going green" and preserving our environment, invest in feeding the birds this season. Native birds thrive with our Californian native plants. Alden Lanes' own "professional birder", Josh Pulcinella, recommends native plants that produce berries, seeds, fruits, nuts, and nectar to attract our feathered friends. Your ecological investment of planting shrubs and trees offer food and shelter to these marvels of the air who can seek protection and hide from predators, like me, in your yard.*

*Paws for Reflection: Act like a convicted criminal. When the humans come home, put your ears back, tail between your legs, chin down and act as if you have done something really bad. Then, watch as the humans frantically search the house for the damage they think you have caused. (Note: this only works when you have done absolutely nothing wrong.)*

## Salsa Alert

This summer's salsa is at Alden Lane Nursery today! If you forgot to plant your tomatoes, peppers and cilantro for zesty salsa - don't worry there's still time this month to plant a vegetable garden so hurry down and let us help you choose the right varieties of tomatoes, peppers, squash, cucumbers, beans, corn and eggplant for your summer cooking. We have a large selection of varieties available through the end of the month.



# Twice as Nice!!



## *“Itoh” Peonies are repeat bloomers!*

The highly sought after Itoh peony is a hybrid form between the herbaceous peony and tree peony that is highly prized for its large blooms and gorgeous color range. For years plant breeders have been trying to reintroduce these legendary hybrids, but the secrets of their propagation were thought to be lost forever. The Itoh peony blooms on old and new wood which makes for a long show of spring blossoms. Peonies thrive in morning sun with shade in afternoon and make great companions of camellias, azaleas, and Japanese maples.

Typically the flowers are used for cutting and bringing indoors where they can be viewed up close to experience the fragrance and detailed colors. Traditional peonies are usually thought of as a one time show, but these new hybrids will extend the flowering season and keep those cut flowers coming. Some of the varieties Alden Lane carries are:

◆ **Bartzella:** very large, bright yellow double blossoms stand above the lush, dark green, deeply dissected foliage. Flowers have a pleasant, slightly spicy scent. An especially vigorous plant, the sturdy flower stems require no staking.

◆ **Cora Louise:** Large, semi-double blossoms, white with striking dark lavender central flares, stand above lush, toothed foliage. Flowers have a soft, pleasing scent and are a wonderful addition to any spring bouquet. An especially vigorous plant - it can produce up to 50 blooms in a single season!

◆ **Kopper Kettle:** Large, semi-double blossoms, copper-orange with a darker center and occasional yellow streaks, stand above lush, toothed foliage.

◆ **Pink Double Dandy:** The large, semi-double to double flower measures up to six inches and is held on strong stems above a compact mound of 24 to 30 inches tall and wide, dark green foliage. As the flower matures, the dark lavender pink petals slowly fade to a soft pink, revealing a cluster of yellow stamens in its center. The flower is lightly fragrant.

◆ **Sequestered Sunshine:** Large, bright canary-yellow blossoms with showy stamens stand above the lush, dark green, deeply dissected foliage. An especially vigorous plant, the sturdy flower stems require no staking and make good cut flowers.

These plants are rare and quantities are limited so fill that special spot in your shade garden with an Itoh peony and it will reward you year after year with plenty of gorgeous blooms.

## More Announcements

- **Watch the Valley Gardener** on TV30 for great gardening tips with host Jacquie Williams-Courtright at 7:30 am and 1:30 p.m. Monday - Friday and repeated on Saturday at 7:30 a.m., 11:00 a.m. and 4:00 p.m. & Sunday at 7:30 a.m., 11 a.m., 1 p.m. and 4 p.m.
- **Don't forget Mother's Day is May 9th.** We have wonderful gift suggestions for Mom. Drop by and let us help you select just the perfect thing for Mom.
- Plan to attend the **Alameda County Fair - June 23 to July 11.** (The fair is closed on Tuesdays.) Advanced Sale Fair Tickets here at the nursery. Log on for more information: [www.alamedacountyfair.com](http://www.alamedacountyfair.com).
- **Composting Information.** Call the Rotline, 510-444-SOIL for information on starting your own composting pile or visit the website at [www.stopwaste.org](http://www.stopwaste.org).
- **Bonsai Club** meetings are the 3rd Saturday of each month, 2 p.m. at Alden Lane Nursery. Come one - come all!

## Success with Succulents & Early Blooming Perennials

**FREE CLASS • Saturday • May 15th 10:00 a.m.**

*Have you experienced the world of succulents yet?*

May is prime time to start or add to your **succulent or cacti gardens**. Come see how the many colors, shapes and textures of succulents can add a new dimension to your sun or semi-shady garden.

When you come to this class our staff will discuss the different varieties available, light and water needs, and when and how to fertilize. We will also talk about the differences between growing these wonderful plants in the ground versus in containers and then demonstrate various ways this group of plants can be used (ie. in colorbowls, windowboxes or integrated into your landscape).

As an added bonus we will also talk about some **early-blooming perennials**. The focus will be those hardy perennials that start their blooming early for us and continue into early summer. So there will be lots to see and talk about at this class on Saturday, May 15th at 10:00 a.m. Call ahead to reserve a seat.



# Win A Free Pair of Modern Bush Roses Plus Planting Supplies



- ★ A Pair of Modern Bush Rose
- ★ 1.5 cu. ft. Master's Rose Planting Mix
- ★ 4 lbs. Master Start

A \$85.00 Value

No purchase necessary.  
Drawing to be held May 31, 2010.

## MODERN BUSH ROSES

May 2010

Name: \_\_\_\_\_

Address: \_\_\_\_\_

City: \_\_\_\_\_

Phone: \_\_\_\_\_

Email: \_\_\_\_\_

Yes, I would like to receive the newsletter online.



## Kidz Club News

Kidz Club is an hour long experience packed with gardening fun at our Alden Lane Farm. We learn all about what it takes to grow our own food by "hands on" practice, and take a special treat home each week. We love to energize your kids about nature! Kidz Club is designed for Kids 5 to 10 years old. Please pre-reserve 5 days in advance of each class. The charge is \$10.00 per child, and is non-refundable unless you want to apply the fee to a future class.

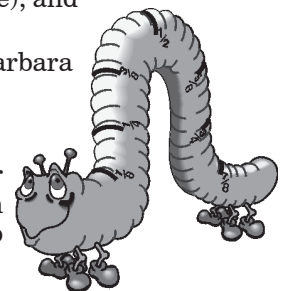
**May 23 from 11:00-12:00 noon — Backyard Chickens - Eggstra! Eggstra! Read All About It!**

An old tradition has come full circle one again, and raising these marvelously efficient, composting, pest controlling egg laying wonders is a family affair with great benefits. Fresh eggs every day is a yummy way to be "green" and we will show you all the basics with our Backyard Chicken Class. We have a couple of great guest speakers, Kristen and Ashley from 4H who have been raising and showing chickens for several years. You will also get to experience our own henhouse here at Alden Lane, and ask questions to your hearts content. The cost is \$10.00 (kids 12 and under are free), and you can sign up with our Alden Lane cashiers to reserve your spot.

Also available at our Chicken Class will be a wonderful book on the subject "Keep Chickens" by Barbara Kilarski- a great handbook that covers everything "chicken" from A to Z!

**June 23 from 2:00-3:00 — Wiggly Worms!**

Visit the farm to check the chickens and plant some seeds, and then learn how important our squirmy, wormy friends of the earth are to our garden. You will also make your very own worm farm to take home, complete with special compost worms that do a wonderful job enriching the garden soil.



**July 28 from 2:00-3:00 — Attracting Birds and Butterflies**

We are off to the Alden Lane Farm to check on the crops, do a little watering and harvesting, and then learn what we can do in our own backyards to entice beneficial birds and butterflies. We will learn how to set up a buffet of goodies for them, and make and take a small bird feeder home.

**August 25 from 2:00 to 3:00 — OWLS!**

Lets get a our hands dirty and see what we can harvest in the Alden Lane Farm, checkout the henhouse

for any eggs and feed the "girls", and then learn about one of the most fascinating birds- the OWL! We will learn lots of fun facts about these hidden creatures that hunt at night and sleep during the day. We've got a great OWL make and take project to bring home so you can share all you've learned!



## It's Time for Bonus Dollars Again!

Our traditional springtime event - **Bonus Dollars** - is back! Bonus Dollars are distributed April 1 through May 31. You earn 10% of your total purchases and are paid in Alden Lane Nursery Bonus Dollars. These Bonus Dollars are redeemable August 1-31. They are to be used for up to 50% of your purchases in August. For example: if you have 10 Bonus Dollars you may use all 10 on a purchase of \$20 or more. Make your selections carefully as purchases made with Bonus Dollars are not returnable.

(Bonus Dollars are not valid with other discounts or coupons. Bonus Dollars are not valid on sod, sale items or other special orders. Sales limited to stock on hand. Not redeemable for cash.)



981 Alden Lane  
Livermore, CA 94550  
(925) 447-0280

Change Service Requested

PRSR STD  
U.S. POSTAGE  
**PAID**  
PERMIT #274  
Livermore, CA

**IMPORTANT!**  
Time Critical  
Please Deliver Promptly

0510

Alden Lane Nursery Hours: Open daily from 8:30 a.m. to 6:00 p.m.  
*We will be open until 5:00 p.m. on May 31st — Memorial Day!*

## SPECIAL COUPON

Present This Coupon & A Canned Food Item  
TO RECEIVE FREE

# A 2" Squash Seedling!!

(99¢ Value)



Food Donations are Optional. All donations go to local relief agencies. One coupon per family, please!  
Offer Good May 1-31, 2010.

## HOW TO FIND ALDEN LANE NURSERY

