



# Alden Lane Nursery Newsletter

MARCH 2010

Serving You Since 1955

981 Alden Lane, Livermore, CA • [www.aldenlane.com](http://www.aldenlane.com) • (925) 447-0280

## Announcements

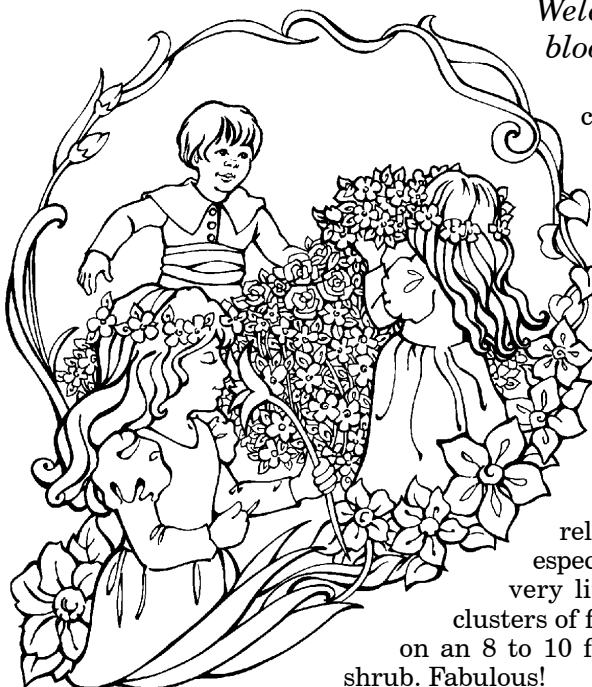
- **Watch the Valley Gardener** on TV30 for great gardening tips with host Jacquie Williams-Courtright at 7:30 am and 1:30 p.m. Monday - Friday and repeated on Saturday at 7:30 a.m., 11:00 a.m. and 4:00 a.m. & Sunday at 7:30 a.m., 11 a.m., 1 p.m. and 4 p.m.
- **The Livermore Amador Valley Garden Club** will meet Thursday, March 11th at 7 p.m. at the Harvest Park Middle School, 4900 Valley Road, Pleasanton. Our meeting features **Susan Ballinger & Victor Ruesga** - "Designing beautiful and bountiful gardens: Plants we love, edibles and more". For more info call Lydia at 461-1725.
- **The Mt. Diablo Rose Society** meets the second Wednesday of the month, 7:30 p.m. at the Dublin Library, 200 Civic Plaza, Dublin. Call for details 829-4929.
- **Bonsai Club** meetings on the 3rd Saturday of each month from 10 a.m. to 1 p.m. at Alden Lane Nursery. Come one, come all!
- **CITRUS TASTING ON MARCH 20TH & 21ST. Come sample dozens of citrus so you can select your favorites to plant! Join us Saturday and Sunday, March 20th & 21st from 10 a.m. to 4 p.m. Bring all your citrus questions and enjoy this "Taste Treat"!!**
- **Fremont Garden Club** meets the 3rd Wed. of every month, February - October. For more info call (510) 401-0138 or email [fremontgardenclub@yahoo.com](mailto:fremontgardenclub@yahoo.com).

## Alden Lane Nursery Hours

8:30 to 5:00 Daily  
Through March 14th

8:30 - 6:00 Daily  
Starting March 15th

## Old Fashion Lilacs Fill the Garden with Fragrance



*Welcome spring with fragrant blooming Lilacs!*

These deciduous shrubs are the classic reminder that warmer days are soon to come. They can be used as a hedge or screen in the landscape, a single accent, or planted in mixed borders. Lilacs attract hummingbirds and butterflies and are surprisingly resistant to deer. We have a great selection of different sizes and colors that will bloom in you garden this year and many years to come. Here is a closer look at just a few of the many varieties available.

**Angel White** may be the most reliable variety to bloom every year especially closer to the bay, as it requires very little winter chilling. Spectacular clusters of fragrant pure white flowers bloom on an 8 to 10 foot tall leafy green easy to grow shrub. Fabulous!

**Ludwig Spaeth** has the darkest purple flowers with a heavy fragrance that blooms a little later than other lilacs to extend the season.

**Sensation** may be the most ornamental lilac with a reddish-purple florets edged in white. The lovely fragrance is an added bonus.

For a smaller option, try **Miss Kim dwarf Korean Lilac**. With her much smaller stature and bushy habit, Miss Kim gets massed with flowers in spring, but then can be easily kept as a small shrub or container plant.

Lilacs are treasured in people's hearts and minds for their classic scent and beauty. Establish them now in spring before summer heat for easiest success, and enjoy them for generations to come.

## Grow Your Own Easter Grass!

We have wheat and annual rye grass seed, perfect to grow an instant Easter egg nest in pots, bowls, vases and baskets. Simply fill the container with soil, sprinkle with seed, water and watch it grow! Wheat seed germinates in 3-4 days, annual rye in 7-10 days ... in time for Easter on April 4th.



# Garden Art Leaf Classes



you've learned the process, making more for yourself or for gifts is addicting! The class size is limited, so sign up soon!

**Leaf Making (part 1)**  
**Saturday, April 17, 10 am**

**Leaf Painting (part 2)**  
**Sunday, May 2, 3 pm**

Our leaf classes have been so well received that we are delighted to offer them again this Spring and Summer.

In our concrete leaf classes we create these beautiful pieces of art together in a two session class. If you've ever talked to anyone who has made one with us, they can attest to how easy and fun it is, and what amazing results- even for those folks who are a little unsure of their artistic talents. We provide all the materials and instruction — and the best part is we clean up afterwards!

These amazing pieces are as gorgeous as they are permanent, durable art for your garden or home, or made into fountains. They are made from fresh, large garden leaves, which we provide, or you are welcome to bring your own. It is a great project to do as a group or for family fun.

Please don't miss making one of these extraordinary leaves, and once



The class fee is \$75.00 plus tax and includes all materials and instruction for both sessions, making and painting.

If you can't make this session, please see our website for the complete schedule or pick up a flyer at Alden Lane and see a sample of the finished art. Call Sue with any questions at 925/447-0280.

## Good Garden Soil Starts Here!!

If you are preparing a vegetable garden now or just dreaming about it, it's still

a great time to improve the soil. Follow our "Recipe" to improve the texture and fertility of your little piece of earth.

This should be a part of your vegetable garden routine one to two times a year. Amend the valley soils to give your plants their best opportunity for growth. Keep this recipe handy for your planting needs.

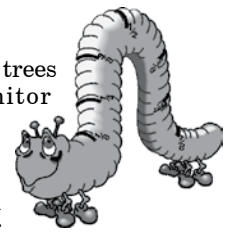
### GOOD GARDEN SOIL!

For each 100 square feet add:

- 10 cubic feet of soil conditioner: **Master Gold Rush** or **Bumper Crop®** (5-8 bags)
- 5 lbs. **Iron Sulfate** to acidify and add iron.
- 10 lbs. **Master Vegetable Food** or **Master Flower Food**, **Master Formula 49** can be used for ground covers.
- 50 lbs. **Gypsum**. It loosens hard soils as it adds sulfur & calcium. (An excellent addition in our heavy soil.)

Mix well with your soil to an 8" depth and water well.

## Prevent Wormy Apples



If you have apple trees and want to monitor codling moth activity to determine the best time to spray, use one of our **Oak Stump Codling Moth Traps**. The lure or bait in the trap duplicates the female codling moth's pheromone, (scented hormone) which attracts the male. Periodically looking into the trap in search of captured moths will alert you as to when the moths are present.

Traps should be used at least two weeks before buds break. Use one to two Fruit Tree Pest Traps in one out of every ten apple trees to help you monitor codling moth activity. Each carton includes 2 traps, lure and hanger.

When codling moths first appear (usually when about 3/4 of the flower petals have fallen from the tree), wait one week and spray with **GardenTech Sevin** once, and then spray weekly with Spinosad mixed with light summer oil for 2-3 weeks. Replace traps monthly and repeat spray regime after additional generations of moths are trapped.

Check out the UC Cooperative Extension Service web site for more detailed options. <http://homeorchard.ucdavis.edu/apple.html>

## Don't Forget Dave's Rose Fertilizer Program

This is a must for those prize-winning roses. David Lowell, co-founder of the Mt. Diablo Rose Society, shares this great rose feeding recipe.

February and August are the two times this is applied:

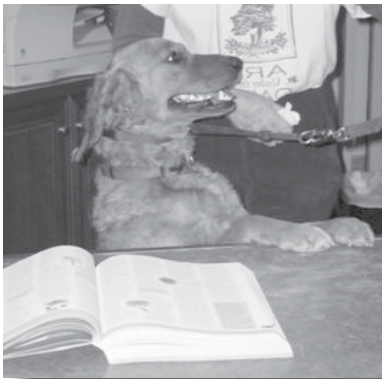
- Master's 16-16-16 Fertilizer ..... ½ cup
- Bone Meal ..... ½ cup
- Magnesium Sulfate ..... 2 tbs.
- Sulfur\* ..... ½ cup

Sprinkle these four ingredients around each rose and mix in if possible. Add a shovel full of chicken fertilizer and water in. Remember never feed a thirsty plant! A one-inch mulch layer may be put around your roses to conserve water and insulate roots from summer heat.

(\* to supply sulfur use one of the following products: Iron Sulfate, Iron Plus or pH adjuster. Note: Most iron containing products can stain, sweep off adjacent paving after application). Iron Plus is now non-staining!

# Notes for March Gardening

- 🎵 **Feed! Feed! Feed!** Winter cold and the rains have washed nutrients from the soil. Fertilize all of your plants to support spring growth. For landscape shrubs and trees feed with **Master's Formula 49 All Purpose Plant Food**. If you have a citrus or avocado trees, use **Master's Citrus Food**. This is a good time to start feeding fruit trees, grapes and berries. We recommend **Master's Fruit Tree & Vine Food** for the nutrition your plants need to produce the best crop ever! Your roses will appreciate a monthly feeding of **Master's Rose & Flower Food**.
- 🎵 Prune azaleas and camellias into shape after their blooms have faded. Feed them with **Master's Camellia, Azalea and Gardenia Food and Iron Plus** monthly through October.
- 🎵 Place **Yellow Jacket traps** out early this month to catch the queen before she starts her family. Prevention is the best cure!
- 🎵 Give your lawn "a meal – not a snack" with **Master Green Lawn Food**.
- 🎵 Bait for snails before they make a meal of your garden. We carry **Master's Snail** control and **Cooke's** products in a variety of forms, along with pet safe **Sluggo** for a non-toxic alternative.
- 🎵 Remember to **water plants** under eaves and in containers. It's important now to deep water trees and shrubs if it isn't raining on a regular basis. Their root systems are starting to grow now.
- 🎵 **Plant your potatoes** this month. St. Patrick's Day is a great day to get them in the ground. Come by the nursery to choose from assorted varieties.
- 🎵 **Start annual morning glories** from seed this month and establish them in the garden or a pot by summer! Morning glories are one of the most stunning of the old fashioned garden flowers. Flowers are huge – three to five inches across – and bright, colorful blue, purple or pink. Best of all, morning glories are easy!
- 🎵 Remember to **plant gladiolus bulbs** (corms) every two weeks and you'll have armloads of cut flowers through the summer.
- 🎵 **Prevent Wormy Apples**. Hang **Oak Stump Codling Moth Traps** to monitor codling moth activity so you know when to spray. Traps should be used at least two weeks before buds break. Use two **Fruit Tree Pest Traps** per apple tree to help you monitor codling moth activity. See additional article in this newsletter for more info.



## Hailey's Comments

*Sustainable salutations to the resourceful members of the gardening community. I'm Hailey, the conservation canine at Alden Lane Nursery. We gardeners of the Livermore Valley are the original partners of an eco-friendly community. Our endeavor of planting gardens has lead our Livermore pack to naturally reclaimed nutrition.*

*To the dog, a bone is a keepsake, received as a gift, and beautiful to the eye of the beholder. We canines bury our mementos*

*while humans publicly display their keepsakes.*

*Knodt's, the local Pure Bred Florist of Livermore since 1947 has a business tradition of creating unique floral treasures for the human race to take notice of. The creative and sentimental gardener can have their homegrown hydrangeas or roses carefully dehydrated and nuzzled into an original wreath or bouquet, showing off their trophy blooms for years to come. The practical young tail waggers can invest in a Re-memorable wrist corsage that serves near and long term purposes. The flowers are attached to a jeweled or beaded bracelet that remains as a lasting memory of the event long after the flowers are removed.*

*Mid March marks the last day of frost for gardeners as well as furry pooches. As the fur bodied creatures around your abode begin to shed their winter coats, so the gardener can shed the frost fabric that has protected their sensitive plants from the vermin frost. The placement of new vegetables can be safely planted out doors as we welcome the warmth of Spring 2010.*

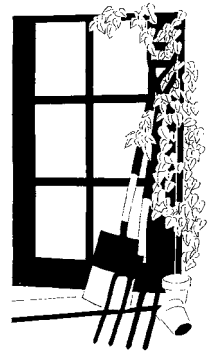
*Paws for Reflection: My dog is worried about the economy because Alpo is increased to \$1.00 per can. That's almost \$7.00 in dog money.*

— Joe Weinstein

## Spading Forks Make Gardening Easier

One of a gardener's most valued tools is certainly a spading fork, especially in our heavy clay soils. Looking like a four-pronged pitchfork but with flattened prongs, a spading fork allows one to dig planting holes and turn over bedding soils with less effort than the conventional all-American, long-handled shovel.

No tool penetrates valley soils when they are dry, but when soils are softened by spring rains; a spading fork beats out a shovel because less surface area touches the soil surface. In other words, the weight and effort of the gardener goes farther. Use a spading fork whenever you would use a conventional shovel.



# From The Garden Store Lavender Gifts from Alden Lane

Lavender comes to the garden store in March. We have scented bubble baths kits, wreaths, soaps, lotions, framed artwork, and much more. We even have lavender colored butterflies, perfect to decorate a lampshade or houseplant! A long time favorite of gardeners and health experts alike, lavender is full of great uses. Today, lavender is used to induce sleep, ease stress and relieve depression. It is also used as a tea, for compresses for dressing wounds, and to apply to the forehead to relieve congestion of sinuses, headaches, hangovers, tiredness, tension and exhaustion.

We have a beautiful selection of lavender gifts perfect for that special someone on your list. Just breath in the scent and you'll start relaxing right away.



## Goodness from the Garden Classes

### *Get Ready to Vegetable Garden*

Saturday, March 27th • 10:00 a.m.

If you missed February's vegetable classes here's another chance to learn about soil preparation, fertilization, and pest management for your vegetable garden. This will be your last opportunity to get prepared before the Spring/ Summer vegetables start arriving in April.

When you come to the class, one of our staff will show you all the organic materials that you will need to "wake-up" and enrich your soil for a great summer vegetable garden. If you're short on ground space but have a sunny area that you can container garden in, we'll show you how to get started and what varieties would be better for you. We also have many, great, informational handouts with how-to tips and vegetable descriptions for you to take home.

We'll also visit our vegetable demo gardens and talk about the "whys" of our successes and failures. So come armed with all your vegetable questions to Alden Lane Nursery on **Saturday, March 27th at 10:00 a.m.** and together we'll help you be a successful vegetable gardener.

### *Herb & Vegetable Pot Planting*

Saturday April 17th • 10:00 a.m.



Bedding has a new way of being "green". Come to this class and view or new biodegradable herb and vegetable pots. We will have brightly colored rice hull pots of varying sizes with "yummy" names like eggplant and buttercup. These reusable pots can add a unique splash of color to your patio or table without the guilt of plastics.

We will also demonstrate different planting combinations

including herbs and spring annuals that will look great in these pots. You will have many plants available, from which to make your selections for your own unique pot.

Another sustainable solution is the wheat-based thermo pots that our vegetables from Fredriks growers will be in this year. These pots and trays are biodegradable and/or combustible. These will be available for viewing and for sale with a vegetable growing in them.

So come with your imaginations ready, to Alden Lane Nursery on **Saturday, April 17th at 10:00 a.m.** and together we will help each other stay green!

## BonideTree and Shrub Insect Control

*One application  
provides a whole year  
of protection*

Many gardeners have at least one tree that is particularly susceptible to insect infestations of one kind or another. Sometimes an insect drops a sticky substance that makes a mess of the patio or whatever is parked below it. An insect can weaken the tree, or in the case of borers, eventually kill the tree. Usually when a customer brings in samples to the nursery and wonders what can be done, the infestation is far enough along that any treatment is expensive and too late.

**Bonide Tree and Shrub Insect Control** is effective and is very easy to use. Apply it now to prevent this year's infestations before they begin. This product can be used on ornamentals for control of borers, aphids and scale, as well as many other insects. (The product may also be used on apples, pears, peaches, plums, cherries, and pecans). It is very easy to use. It is not sprayed on, but is diluted with water and poured around the base of the tree. One application provides a whole year of protection.

Get a head start and apply it to those trees you have with a reputation for infestation.

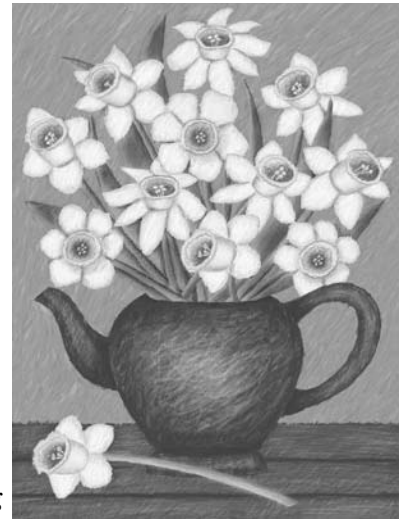
**Hear Ye!  
Hear Ye!**

**Come to the  
Daffodil Town Hall!!**

**Open To All Gardeners!!**

**12:00 noon - 2:00 p.m. • March 6, 2010 • FREE!**

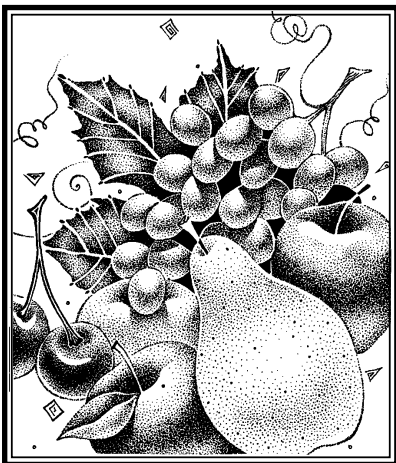
The Northern California Daffodil Society experts **Melissa Reading, Kirby Fong and Bob Spotts** will bring and display examples of many different colors and types of daffodils. They'll explain their differences, and tell which ones are best suited to growing in our area and why. They'll give some growing tips to gardeners who want to add daffodils to their spring blooming flowers. Gardeners are invited to bring daffodils from their gardens – for others to see and for the experts to identify. **Any and all questions will be welcomed and answered.**



## More Announcements

- \* Remember **Seed Potatoes are available now.** Choose from assorted varieties.
  - \* **The 26th Annual Bouquet's to Art** is back at the de Young Museum in San Francisco, April 20-24. Floral designers fill the de Young museum galleries with floral tributes complementing works of art. Please call for prices and more information call 800-777-9996 or visit [www.bouquetstoart.org](http://www.bouquetstoart.org).
  - \* Buy advance sale tickets for the **25th Annual San Francisco Flower and Garden Show** here at Alden Lane. The show runs from March 24th - 28th at the San Mateo Event Center. Advance sale tickets must be purchased by March 17th. Regular admission is \$20.00, advance sale are \$16.00. The show theme is "Garden for the Future". Regularly priced admission tickets will be available after the 17th. **The bonus**, not standing in line at the show.
- Show hours:  
Wed. - Sat.: 10 a.m. - 8 p.m.,  
Sunday: 10 a.m. - 6 p.m.
- \* **Give the "Gift of Green" To Celebrate St. Pat's Day**

You do know that everyone and everybody is Irish on St. Patrick's Day? To celebrate this wonderful day stop by the nursery and choose something green! One of the day's specialties is pot of shamrocks. We can even add a green bow to make it official! So stop by and celebrate the 'wearing of the green'.



## BACKYARD ORCHARD SEMINAR

Bumper crops and heavy harvests await those who attend our monthly fruit growing seminars.

Get in depth instruction on a different fruit each month, as well as techniques in pruning, disease control, and much more!

We will cover the entire "backyard orchard" over the year including grapes, berries, and citrus fruits. We want you to be the most successful you can be in achieving your goals of a fruitful, nutritious lifestyle.

Attend multiple classes to earn a ticket to the 2010 Fall Harvest recipe party, and get "Alden Lane Certified" as an official Backyard Orchard specialist! Giveaway items, information hand-outs, and raffle prizes will be available at every class.

All classes are to run from 11 - 12 o'clock with extra time for Q & A and will cost \$5 (**bring a friend for free!**) Call ahead to prepay and reserve a seat.

**Saturday, March 20th**

**11:00 - 12:00 noon**

**"Citrus & Container Grown Fruit"**

Josh will cover variety selection, provide planting suggestions along with care and feeding guidelines.

# Summer Bouquets Start Today!

All the bulbs you plant this spring will fill your summer gardens with armloads of beautiful cut flowers. Think about what a great addition the dahlias and gladiolus will provide to a summer bouquet.

**Glads** – The tall flower stalks covered with beautiful florets. If you plant two weeks apart you will have plenty of garden color and loads of cut flowers to arrange in summer bouquets.

**Dahlias** – Take your pick of separate colors in dinner plate, decorative, cactus and pompom flower forms are show stoppers.

**Lilies** – Pure white Casa Blanca and Raspberry Stargazer are beautiful Oriental Lilies to include in your garden. Find a spot for the bright orange Tiger Lily.

**Tuberous Begonias** – Beautiful hybrids with ruffled double flowers in rose form, upright and hanging basket varieties. Choose firm tubers for planting.

Check with our staff for detailed planting instructions. We have the bulbs, the know-how and the experience to get you growing.



# Snap, Crackle & Pop! Plant Snapdragons Now!!

Do you remember the fun of “snapping” Snapdragon flowers as a kid? It’s time to introduce your children or grandchildren to the wonder of these flowering plants. Antirrhinum majus better known as the Snapdragon is available in colors of rose, red, pink, yellow and white. The best time to start them in your garden is Spring or early summer and they will give your garden that “pop” of color long into the Fall. Flower stalks can grow 18 to 24 inches tall so they make a great backdrop for other annuals or as centerpieces for pots or island plantings. Their tall stalks also make them ideal for your cut flower needs. Snapdragons like full sun

areas, with good draining soil and regular fertilization such as Master Nursery Rose and Flower food. With proper care and regular “deadheading”, which is cutting off old, spent, flower stalks, snapdragons can last for 2 years or more! We offer snapdragons in mixed cell packs, 4 inch pots or gallon containers and **all are 25% OFF THEIR REGULAR PRICE FOR THE MONTH OF MARCH.**

## Camellia Petal Blight

Brown patches within the emerging flower bud & petals and rotting blossoms signal the arrival of camellia petal blight. Caused by a fungus that infects the blossom, falls to the ground, lives over the year in a dormant state and re-emerges with wet weather to disperse spores and reinfect the new flower buds. Until now relatively difficult to manage.

**Bayer Advanced Disease Control for Roses, Flowers and Shrubs** is the first product in several years to list Camellia petal blight control on its label. Until now we have been without any know chemical controls for California home owners. Spray Bayer Advanced Disease Control into the flowers as they open and develop color to prevent this unsightly disease from destroying your bounty of blooms.

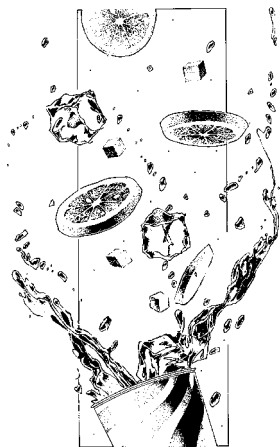
University of California cooperative extension web site also suggests applying a 4" thick layer of mulch under the camellia annually (after blooming finishes) to prevent the spores from dispersing. They recommend keeping the plant and surrounding ground cleaned of the affected blossoms and placing debris in the garbage, not the compost pile.

## For Fabulous Flower Beds . . . Read on!!

Spectacular flower beds can be yours with just a little pre-planning and a trip to Alden Lane Nursery. You can still plant your flower beds with **white Alyssum, yellow Calendula, red Dianthus, orange Iceland Poppies, blue Violas, pink Stock, and purple Violas.**

For shade gardeners, do not forget **Primroses** in a multitude of colors. Also coming toward the end of March you will be able to plant **blue Bachelor buttons, red Fibrous Begonias** and **dark blue Lobelia, yellow Marigolds** and **pink Petunias.**

Come to Alden Lane Nursery for all your annual color needs. See you soon!



# Win A Citrus Tree

You'll be enjoying home grown oranges, lemons or limes when you win your citrus in this month's contest. Just drop off the entry form at the nursery the next time you visit, and you may be the winner!

## YOU'LL WIN:

- (1) **5 gallon citrus** of your choice
- 2 cubic ft of **Master's Planting Mix**
- 5 lbs. of **Master's Start**
- 5 lbs. of **Iron Sulfate**
- 5 lbs. of **Master's Citrus Food**

A \$75.00 Value

No purchase necessary.

Drawing to be held 3/31/2010.

## CITRUS TREE

March 2010

Name: \_\_\_\_\_

Address: \_\_\_\_\_

City: \_\_\_\_\_

Phone: \_\_\_\_\_

Email: \_\_\_\_\_

Yes, I would like to receive the newsletter online.

## Citrus Tasting on March 20th & 21st

*Come sample dozens of citrus so you can select your favorites to plant! Join us Saturday and Sunday, March 20th & 21st from 10 a.m. to 4 p.m. Bring all your citrus questions and enjoy this "Taste Treat"!!*

## Citrus For Valley Gardeners

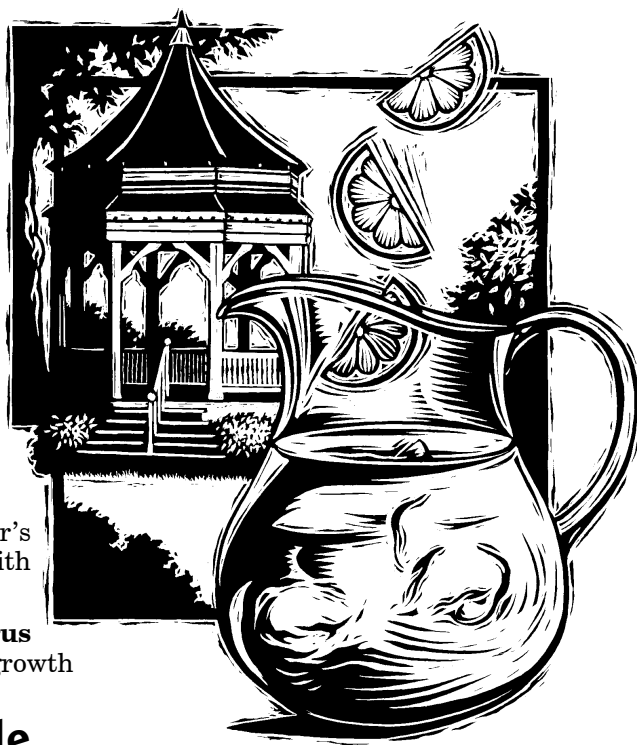
There are many varieties of citrus that do well in our area. Select a lemon, tangerine, orange or lime tree for home grown citrus. Choose a dwarf variety for a balcony or patio; they do equally well in planters or in the ground; or choose a standard size tree for larger spaces. It will add to the beauty of your landscape as well as produce fragrant flowers and delicious fruit. Follow these steps to a healthy, productive citrus:

- Select a warm, sunny location. Citrus need heat and sun and they need to be protected from the wind and winter cold. The south side of your home is the warmest and provides maximum sun.
- Provide a well drained soil that allows roots to absorb moisture, not stand in it. To avoid root rot, our heavy Valley soils need good soil preparation: dig a hole 2 times the width of the container and mix your soil 50-50 with Master's Planting Mix. Add and mix a cup of Master Start to the hole, backfill with the soil mix and water with Root Master B-1. For container planting, plant directly into Master's Potting Soil. Do not cover the top of the existing rootball and trunk with any soil.

Fertilize monthly as citrus are heavy feeders. Use **Master's Citrus Food**. We recommend the following feeding schedule for optimum growth and heavy fruit set.

## Citrus Feeding & Care Schedule

- ▲ **YEAR AROUND:** Feed **Master Nursery Citrus Food** monthly. (Though the bag will state fertilize 3 times a year, our citrus grower, 4-Winds Citrus, suggests dividing the years' supply by 12 and giving a little each month rather than the 3-times per year.) This method avoids high and low swings of nutrients and provides for evenly dark green foliage year round.
- ▲ **MARCH, MAY AND SEPTEMBER:** Apply **Iron Sulfate** or **Iron Plus** as directed. It acidifies and adds needed iron.
- ▲ **AS NEEDED:** Apply Sluggo Plus to control snails, slugs, and other hungry bugs. Sluggo Plus is safe and labeled for organic gardening. It can be applied around the base of a citrus tree, or sprinkled onto foliage that has just been moistened (to help the product stick).





981 Alden Lane  
Livermore, CA 94550  
(925) 447-0280

Change Service Requested

**IMPORTANT!**  
Time Critical  
Please Deliver Promptly

0310

PRSR STD  
U.S. POSTAGE  
**PAID**  
PERMIT #274  
Livermore, CA

## SPECIAL COUPON

Present This Coupon & A Canned Food Item  
TO RECEIVE FREE

# A 3" Strawberry Plant!!



(\$2.99 Value)

Food Donations are Optional. All donations go to Tri Valley Haven. One coupon per family, please!

Offer Good  
March 1-31, 2010.

## HOW TO FIND ALDEN LANE NURSERY

